

## C/EBP Epsilon Polyclonal Antibody

### Description

<b>Product type</b>	Primary Antibody
<b>Code</b>	BT-AP01021
<b>Host</b>	Rabbit
<b>Isotype</b>	IgG
<b>Size</b>	20ul, 50ul, 100ul
<b>Immunogen</b>	The antiserum was produced against synthesized peptide derived from human CEBPE. AA range:191-240
<b>Mol wt</b>	30603
<b>Species reactivity</b>	Human, Mouse, Rat
<b>Clonality</b>	Polyclonal
<b>Recommended application</b>	WB, IHC-p, ELISA
<b>Concentration</b>	1 mg/ml
<b>Full name</b>	C/EBP epsilon Antibody
<b>Synonyms</b>	CEBPE; CCAAT/enhancer-binding protein epsilon; C/EBP epsilon

**This product is for research use only, not for use in human, therapeutic or diagnostic procedure.**

### Background

The protein encoded by CEBPE is a bZIP transcription factor which can bind as a homodimer to certain DNA regulatory regions. It can also form heterodimers with the related protein CEBP-delta. The encoded protein (CCAAT/enhancer binding protein epsilon) may be essential for terminal differentiation and functional maturation of committed granulocyte progenitor cells. Mutations in this gene have been associated with Specific Granule Deficiency, a rare congenital disorder. Multiple variants of this gene have been described, but the full-length nature of only one has been determined.

### Recommended Dilution

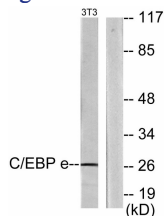
WB: 1: 500 - 1: 2000

IHC: 1: 100 - 1: 300

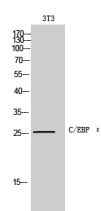
ELISA: 1: 10000

Not yet tested in other applications.

### Images



Western blot analysis of lysates from NIH/3T3 cells, using CEBPE Antibody. The lane on the right is blocked with the synthesized peptide.



Western Blot analysis of 3T3 cells using C/EBP ε Polyclonal Antibody cells nucleus.

## Storage

-20°C for one year

501 Changsheng S Rd, Nanhu Dist, Jiaxing, Zhejiang, China

Tel: 86 21 31007137 | E-mail: [save@bt-laboratory.com](mailto:save@bt-laboratory.com) | [www.bt-laboratory.com](http://www.bt-laboratory.com)