

## C/EBP Zeta Polyclonal Antibody

### Description

<b>Product type</b>	Primary Antibody
<b>Code</b>	BT-AP01023
<b>Host</b>	Rabbit
<b>Isotype</b>	IgG
<b>Size</b>	20ul, 50ul, 100ul
<b>Immunogen</b>	The antiserum was produced against synthesized peptide derived from human CEBPZ. AA range:1-50
<b>Mol wt</b>	120988
<b>Species reactivity</b>	Human
<b>Clonality</b>	Polyclonal
<b>Recommended application</b>	WB, IHC-p, IF, ELISA
<b>Concentration</b>	1 mg/ml
<b>Full name</b>	C/EBP zeta Antibody
<b>Synonyms</b>	CEBPZ; CBF2; CCAAT/enhancer-binding protein zeta; CCAAT-box-binding transcription factor; CBF; CCAAT-binding factor

**This product is for research use only, not for use in human, therapeutic or diagnostic procedure.**

### Background

CEBPZ belongs to the CEBP family. The encoded protein (CCAAT/enhancer binding protein zeta) plays a role in cellular response to environmental stimuli through a transcriptional process that involves heat shock factors, conserved DNA elements (heat shock elements or HSEs) and CCAAT boxes. The protein acts as a DNA-binding transcriptional activator and regulates the heat-shock protein 70 (HSP70) promoter in a CCAAT-dependent manner. The protein is also involved in cell growth and differentiation, particularly, hematopoietic differentiation. Methylation of the promoter of CEBPZ or mutations within CEBPZ may be correlated with occurrence of acute myeloid leukemia (AML).

### Recommended Dilution

WB: 1: 500 - 1: 2000

IHC: 1: 100 - 1: 300

IF: 1: 200 - 1: 1000

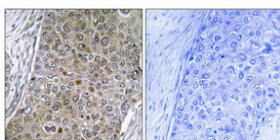
ELISA: 1: 20000

Not yet tested in other applications.

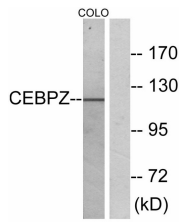
### Images



Western Blot analysis of various cells using C/EBP  $\zeta$  Polyclonal Antibody cells nucleus.



Immunohistochemical analysis of paraffin-embedded Human breast cancer. Antibody was diluted at 1:100(4° overnight). High-pressure and temperature Tris-EDTA,pH8.0 was used for antigen retrieval. Negative contrl (right) obtained from antibody was pre-absorbed by immunogen peptide.



### Storage

-20°C for one year

501 Changsheng S Rd, Nanhu Dist, Jiaxing, Zhejiang, China

Tel: 86 21 31007137 | E-mail: [save@bt-laboratory.com](mailto:save@bt-laboratory.com) | [www.bt-laboratory.com](http://www.bt-laboratory.com)