

KIF20A(Phospho Ser528) Polyclonal Antibody

Description

Product type	Primary Antibody
Code	BT-AP01027
Host	Rabbit
Isotype	IgG
Size	100ul, 50ul, 20ul
Immunogen	The antiserum was produced against synthesized peptide derived from human KIF20A around the phosphorylation site of Ser528. AA range:501-550
Mol wt	100278
Species reactivity	Human, Rat, Mouse
Clonality	Polyclonal
Recommended application	WB, IHC-p, IF, ELISA
Concentration	1 mg/ml
Full name	Kinesin-like protein KIF20A
Synonyms	Kinesin-like protein KIF20A; KIF20A; MKLP2; RAB6KIFL; Kinesin-like protein KIF20A; GG10_2; Mitotic kinesin-like protein 2; MKlp2; Rab6-interacting kinesin-like protein; Rabkinesin-6

This product is for research use only, not for use in human, therapeutic or diagnostic procedure.

Background

Interacts with guanosine triphosphate (GTP)-bound forms of RAB6A and RAB6B. May act as a motor required for the retrograde RAB6 regulated transport of Golgi membranes and associated vesicles along microtubules. Has a microtubule plus end-directed motility. Belongs to the kinesin-like protein family. Contains 1 kinesin-motor domain.

Recommended Dilution

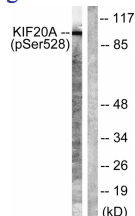
WB: 1: 500 - 1: 2000

IHC-p: 1: 100 - 1: 300

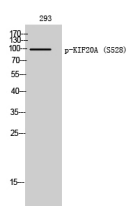
ELISA: 1: 5000

Not yet tested in other applications.

Images



Western Blot analysis of 293 cells using Phospho-KIF20A (S528) Polyclonal Antibody



Western blot analysis of lysates from 293 cells, using KIF20A (Phospho-Ser528) Antibody. The lane on the right is blocked with the phospho peptide.

Storage

-20°C for 1 year

501 Changsheng S Rd, Nanhu Dist, Jiaxing, Zhejiang, China

Tel: 86 21 31007137 | E-mail: save@bt-laboratory.com | www.bt-laboratory.com