

C1INH Polyclonal Antibody

Description

Product type	Primary Antibody
Code	BT-AP01028
Host	Rabbit
Isotype	IgG
Size	20ul, 50ul, 100ul
Immunogen	The antiserum was produced against synthesized peptide derived from human SERPING1. AA range:342-391
Mol wt	55154
Species reactivity	Human
Clonality	Polyclonal
Recommended application	WB, IHC-p, ELISA
Concentration	1 mg/ml
Full name	C1INH Antibody
Synonyms	SERPING1; C1IN; C1NH; Plasma protease C1 inhibitor; C1 Inh; C1Inh; C1 esterase inhibitor; C1-inhibiting factor; Serpin G1

This product is for research use only, not for use in human, therapeutic or diagnostic procedure.

Background

SERPING1 encodes a highly glycosylated plasma protein (serpin family G member 1) involved in the regulation of the complement cascade. Its protein inhibits activated C1r and C1s of the first complement component and thus regulates complement activation. Deficiency of this protein is associated with hereditary angioneurotic oedema (HANE). Alternative splicing results in multiple transcript variants encoding the same isoform.

Recommended Dilution

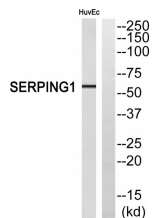
WB: 1: 500 - 1: 2000

IHC: 1: 100 - 1: 300

ELISA: 1: 40000

Not yet tested in other applications.

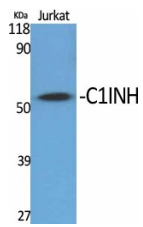
Images



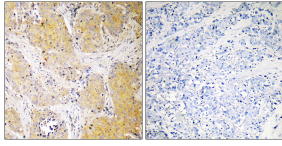
Western blot analysis of SERPING1 Antibody. The lane on the right is blocked with the SERPING1 peptide.



Western Blot analysis of HuvEc cells using C1INH Polyclonal Antibody



Western Blot analysis of various cells using C1INH Polyclonal Antibody



Immunohistochemistry analysis of paraffin-embedded human breast cancer, using SERPING1 Antibody. The picture on the right is blocked with the SERPING1 peptide.

Storage

-20°C for one year

501 Changsheng S Rd, Nanhu Dist, Jiaxing, Zhejiang, China

Tel: 86 21 31007137 | E-mail: save@bt-laboratory.com | www.bt-laboratory.com