

C1q-B Polyclonal Antibody

Description

Product type	Primary Antibody
Code	BT-AP01031
Host	Rabbit
Isotype	IgG
Size	20ul, 50ul, 100ul
Immunogen	The antiserum was produced against synthesized peptide derived from human C1QB. AA range:161-210
Mol wt	26459
Species reactivity	Human
Clonality	Polyclonal
Recommended application	WB, IHC-p, IF, ELISA
Concentration	1 mg/ml
Full name	C1q-B Antibody
Synonyms	C1QB; Complement C1q subcomponent subunit B

This product is for research use only, not for use in human, therapeutic or diagnostic procedure.

Background

C1QB encodes a major constituent of the human complement subcomponent C1q. C1q associates with C1r and C1s in order to yield the first component of the serum complement system. Deficiency of C1q has been associated with lupus erythematosus and glomerulonephritis. C1q is composed of 18 polypeptide chains: six A-chains, six B-chains, and six C-chains. Each chain contains a collagen-like region located near the N terminus and a C-terminal globular region. The A-, B-, and C-chains are arranged in the order A-C-B on chromosome 1. This gene encodes the B-chain polypeptide of human complement subcomponent C1q.

Recommended Dilution

WB: 1: 500 - 1: 2000

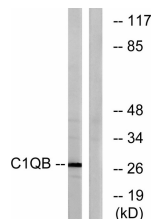
IHC: 1: 100 - 1: 300

IF: 1: 200 - 1: 1000

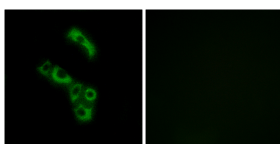
ELISA: 1: 40000

Not yet tested in other applications.

Images



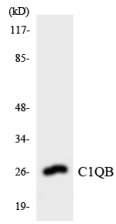
Western blot analysis of lysates from Jurkat cells, using C1QB Antibody. The lane on the right is blocked with the synthesized peptide.



Immunofluorescence analysis of A549 cells, using C1QB Antibody. The picture on the right is blocked with the synthesized peptide.



Western Blot analysis of various cells using C1q-B Polyclonal Antibody diluted at 1:1000



Western blot analysis of the lysates from Jurkat cells using C1QB antibody.

Storage

-20°C for one year

501 Changsheng S Rd, Nanhu Dist, Jiaxing, Zhejiang, China

Tel: 86 21 31007137 | E-mail: save@bt-laboratory.com | www.bt-laboratory.com