

C1QBP Polyclonal Antibody

Description

Product type	Primary Antibody
Code	BT-AP01032
Host	Rabbit
Isotype	IgG
Size	20ul, 50ul, 100ul
Immunogen	The antiserum was produced against synthesized peptide derived from human C1QBP. AA range:61-110
Mol wt	31362
Species reactivity	Human, Mouse, Rat
Clonality	Polyclonal
Recommended application	WB, IHC-p, ELISA
Concentration	1 mg/ml
Full name	C1QBP Antibody
Synonyms	C1QBP; GC1QBP; HABP1; SF2P32; Complement component 1 Q subcomponent-binding protein; mitochondrial; GC1q-R protein; Glycoprotein gC1qBP; C1qBP; Hyaluronan-binding protein 1; Mitochondrial matrix prot

This product is for research use only, not for use in human, therapeutic or diagnostic procedure.

Background

The human complement subcomponent C1q associates with C1r and C1s in order to yield the first component of the serum complement system. The protein encoded by C1QBP is known to bind to the globular heads of C1q molecules and inhibit C1 activation. This protein (complement C1q binding protein) has also been identified as the p32 subunit of pre-mRNA splicing factor SF2, as well as a hyaluronic acid-binding protein.

Recommended Dilution

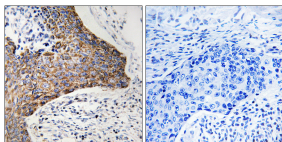
WB: 1: 500 - 1: 2000

IHC: 1: 100 - 1: 300

ELISA: 1: 40000

Not yet tested in other applications.

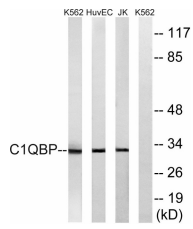
Images



Immunohistochemistry analysis of paraffin-embedded human tonsil tissue, using C1QBP Antibody. The picture on the right is blocked with the synthesized peptide.



Western Blot analysis of various cells using C1QBP Polyclonal Antibody diluted at 1:1000



Storage

-20°C for one year

501 Changsheng S Rd, Nanhu Dist, Jiaxing, Zhejiang, China

Tel: 86 21 31007137 | E-mail: save@bt-laboratory.com | www.bt-laboratory.com