

C1s Polyclonal Antibody

Description

Product type	Primary Antibody
Code	BT-AP01041
Host	Rabbit
Isotype	IgG
Size	20ul, 50ul, 100ul
Immunogen	The antiserum was produced against synthesized peptide derived from human C1s. AA range:541-590
Mol wt	76684
Species reactivity	Human
Clonality	Polyclonal
Recommended application	WB, IHC-p, ELISA
Concentration	1 mg/ml
Full name	C1s Antibody
Synonyms	C1S; Complement C1s subcomponent; C1 esterase; Complement component 1 subcomponent s

This product is for research use only, not for use in human, therapeutic or diagnostic procedure.

Background

C1S (complement C1s) encodes a serine protease, which is a major constituent of the human complement subcomponent C1. C1s associates with two other complement components C1r and C1q in order to yield the first component of the serum complement system. Defects in this gene are the cause of selective C1s deficiency.

Recommended Dilution

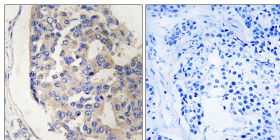
WB: 1: 500 - 1: 2000

IHC: 1: 100 - 1: 300

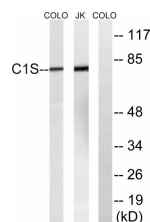
ELISA: 1: 40000

Not yet tested in other applications.

Images



Immunohistochemistry analysis of paraffin-embedded human breast carcinoma tissue, using C1S Antibody. The picture on the right is blocked with the synthesized peptide.



Western blot analysis of lysates from Jurkat and COLO cells, using C1S Antibody. The lane on the right is blocked with the synthesized peptide.

Storage

-20°C for one year