

## C32 Polyclonal Antibody

### Description

Product type	Primary Antibody
Code	BT-AP01045
Host	Rabbit
Isotype	IgG
Size	20ul, 50ul, 100ul
Immunogen	Synthesized peptide derived from Chemokine-like factor at AA range: 103-152
Mol wt	17170
Species reactivity	Human
Clonality	Polyclonal
Recommended application	WB, ELISA
Concentration	1 mg/ml
Full name	C32 Antibody
Synonyms	CKLF; CKLF1; HSPC224; Chemokine-like factor; C32

This product is for research use only, not for use in human, therapeutic or diagnostic procedure.

### Background

The product of CKLF (chemokine like factor) is a cytokine. Cytokines are small proteins that have an essential role in the immune and inflammatory responses. CKLF is one of several chemokine-like factor genes located in a cluster on chromosome 16. The protein encoded by CKLF is a potent chemoattractant for neutrophils, monocytes and lymphocytes. It also can stimulate the proliferation of skeletal muscle cells. This protein may play important roles in inflammation and in the regeneration of skeletal muscle. Alternatively spliced transcript variants encoding different isoforms have been identified. Naturally occurring read-through transcription occurs between this locus and the neighboring locus CMTM1 (CKLF-like MARVEL transmembrane domain containing 1).

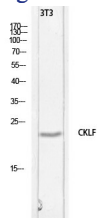
### Recommended Dilution

WB: 1: 500 - 1: 2000

ELISA: 1: 10000

Not yet tested in other applications.

### Images



Western blot analysis of 3T3 lysis using CKLF antibody. Secondary antibody was diluted at 1:20000

### Storage

-20°C for one year