

C3G Polyclonal Antibody

Description

Product type	Primary Antibody
Code	BT-AP01047
Host	Rabbit
Isotype	IgG
Size	20ul, 50ul, 100ul
Immunogen	The antiserum was produced against synthesized peptide derived from human RAPGEF1. AA range:470-519
Mol wt	120548
Species reactivity	Human
Clonality	Polyclonal
Recommended application	IHC-p, ELISA
Concentration	1 mg/ml
Full name	C3G Antibody
Synonyms	RAPGEF1; GRF2; Rap guanine nucleotide exchange factor 1; CRK SH3-binding GNRP; Guanine nucleotide-releasing factor 2; Protein C3G

This product is for research use only, not for use in human, therapeutic or diagnostic procedure.

Background

RAPGEF1 encodes a human guanine nucleotide exchange factor. It transduces signals from CRK by binding the SH3 domain of CRK, and activating several members of the Ras family of GTPases. This signaling cascade that may be involved in apoptosis, integrin-mediated signal transduction, and cell transformation. Several alternatively spliced transcript variants of this gene have been described, but the full-length nature of some variants has not been determined.

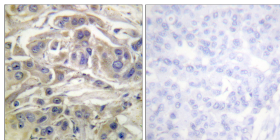
Recommended Dilution

IHC: 1: 100 - 1: 300

ELISA: 1: 5000

Not yet tested in other applications.

Images



Immunohistochemistry analysis of paraffin-embedded human breast carcinoma, using RapGEF1 Antibody. The picture on the right is blocked with the synthesized peptide.

Storage

-20°C for one year