

CA II Polyclonal Antibody

Description

Product type	Primary Antibody
Code	BT-AP01056
Host	Rabbit
Isotype	IgG
Size	20ul, 50ul, 100ul
Immunogen	The antiserum was produced against synthesized peptide derived from human CA II. AA range:180-229
Mol wt	29246
Species reactivity	Human, Rat
Clonality	Polyclonal
Recommended application	WB, IHC-p, ELISA
Concentration	1 mg/ml
Full name	CA II Antibody
Synonyms	CA2; Carbonic anhydrase 2; Carbonate dehydratase II; Carbonic anhydrase C; CAC; Carbonic anhydrase II; CA-II

This product is for research use only, not for use in human, therapeutic or diagnostic procedure.

Background

The protein encoded by CA2 (carbonic anhydrase 2) is one of several isozymes of carbonic anhydrase, which catalyzes reversible hydration of carbon dioxide. Defects in this enzyme are associated with osteopetrosis and renal tubular acidosis. Two transcript variants encoding different isoforms have been found for CA2.

Recommended Dilution

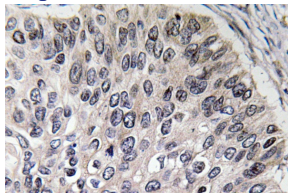
WB: 1: 500 - 1: 2000

IHC: 1: 100 - 1: 300

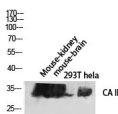
ELISA: 1: 40000

Not yet tested in other applications.

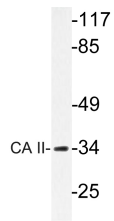
Images



Immunohistochemistry analysis of CA II antibody in paraffin-embedded human lung carcinoma tissue.



Western blot analysis of Mouse-kidney mouse-brain 293T hela lysis using CA II antibody. Antibody was diluted at 1:2000



Western blot analysis of lysate from rat heart cells, using CA II antibody.

Storage

-20°C for one year

501 Changsheng S Rd, Nanhu Dist, Jiaxing, Zhejiang, China

Tel: 86 21 31007137 | E-mail: save@bt-laboratory.com | www.bt-laboratory.com