

## CA VI Polyclonal Antibody

### Description

<b>Product type</b>	Primary Antibody
<b>Code</b>	BT-AP01062
<b>Host</b>	Rabbit
<b>Isotype</b>	IgG
<b>Size</b>	20ul, 50ul, 100ul
<b>Immunogen</b>	The antiserum was produced against synthesized peptide derived from human CA6. AA range:231-280
<b>Mol wt</b>	35367
<b>Species reactivity</b>	Human
<b>Clonality</b>	Polyclonal
<b>Recommended application</b>	WB, ELISA
<b>Concentration</b>	1 mg/ml
<b>Full name</b>	CA VI Antibody
<b>Synonyms</b>	CA6; Carbonic anhydrase 6; Carbonate dehydratase VI; Carbonic anhydrase VI; CA-VI; Salivary carbonic anhydrase; Secreted carbonic anhydrase

This product is for research use only, not for use in human, therapeutic or diagnostic procedure.

### Background

The protein encoded by CA6 is one of several isozymes of carbonic anhydrase. This protein (carbonic anhydrase 6) is found only in salivary glands and saliva and protein may play a role in the reversible hydration of carbon dioxide though its function in saliva is unknown.

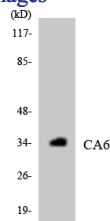
### Recommended Dilution

WB: 1: 500 - 1: 2000

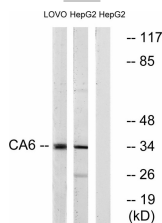
ELISA: 1: 20000

Not yet tested in other applications.

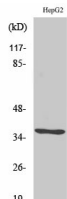
### Images



Western blot analysis of the lysates from HepG2 cells using CA6 antibody.



Western blot analysis of lysates from HepG2, and LOVO cells, using CA6 Antibody. The lane on the right is blocked with the synthesized peptide.



Western Blot analysis of various cells using CA VI Polyclonal Antibody

## Storage

-20°C for one year

501 Changsheng S Rd, Nanhu Dist, Jiaxing, Zhejiang, China

Tel: 86 21 31007137 | E-mail: [save@bt-laboratory.com](mailto:save@bt-laboratory.com) | [www.bt-laboratory.com](http://www.bt-laboratory.com)