

CA XII Polyclonal Antibody

Description

Product type	Primary Antibody
Code	BT-AP01064
Host	Rabbit
Isotype	IgG
Size	20ul, 50ul, 100ul
Immunogen	The antiserum was produced against synthesized peptide derived from human CA12. AA range:231-280
Mol wt	39451
Species reactivity	Human, Mouse, Rat
Clonality	Polyclonal
Recommended application	WB, IHC-p, ELISA
Concentration	1 mg/ml
Full name	CA XII Antibody
Synonyms	CA12; Carbonic anhydrase 12; Carbonate dehydratase XII; Carbonic anhydrase XII; CA-XII; Tumor antigen HOM-RCC-3.1.3

This product is for research use only, not for use in human, therapeutic or diagnostic procedure.

Background

Carbonic anhydrases (CAs) are a large family of zinc metalloenzymes that catalyze the reversible hydration of carbon dioxide. They participate in a variety of biological processes, including respiration, calcification, acid-base balance, bone resorption, and the formation of aqueous humor, cerebrospinal fluid, saliva, and gastric acid. The gene product CA12 (carbonic anhydrase 12) is a type I membrane protein that is highly expressed in normal tissues, such as kidney, colon and pancreas, and has been found to be overexpressed in 10% of clear cell renal carcinomas. Three transcript variants encoding different isoforms have been identified for CA12.

Recommended Dilution

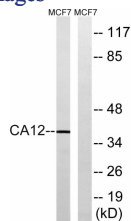
WB: 1: 500 - 1: 2000

ELISA: 1: 40000

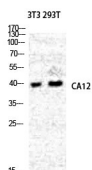
IHC-p: 100 - 300

Not yet tested in other applications.

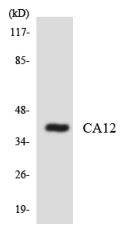
Images



Western blot analysis of lysates from MCF-7 cells, using CA12 Antibody. The lane on the right is blocked with the synthesized peptide.



Western Blot analysis of NIH-3T3 293T cells using CA XII Polyclonal Antibody diluted at 1:2000



Western blot analysis of the lysates from COLO205 cells using CA12 antibody.

Storage

-20°C for one year

501 Changsheng S Rd, Nanhu Dist, Jiaxing, Zhejiang, China

Tel: 86 21 31007137 | E-mail: save@bt-laboratory.com | www.bt-laboratory.com