

CABC1 Polyclonal Antibody

Description

Product type	Primary Antibody
Code	BT-AP01068
Host	Rabbit
Isotype	IgG
Size	20ul, 50ul, 100ul
Immunogen	The antiserum was produced against synthesized peptide derived from human ADCK3. AA range:301-350
Mol wt	71950
Species reactivity	Human, Mouse, Rat
Clonality	Polyclonal
Recommended application	WB, IHC-p, IF, ELISA
Concentration	1 mg/ml
Full name	CABC1 Antibody
Synonyms	ADCK3; CABC1; PP265; Chaperone activity of bc1 complex-like; mitochondrial; Chaperone-ABC1-like; aarF domain-containing protein kinase 3

This product is for research use only, not for use in human, therapeutic or diagnostic procedure.

Background

ADCK3 encodes a mitochondrial protein similar to yeast ABC1, which functions in an electron-transferring membrane protein complex in the respiratory chain. It is not related to the family of ABC transporter proteins. Expression of this gene is induced by the tumor suppressor p53 and in response to DNA damage, and inhibiting its expression partially suppresses p53-induced apoptosis. Alternatively spliced transcript variants have been found; however, their full-length nature has not been determined.

Recommended Dilution

WB: 1: 500 - 1: 2000

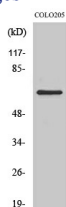
IHC: 1: 100 - 1: 300

IF: 1: 200 - 1: 1000

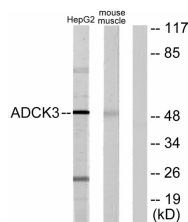
ELISA: 1: 10000

Not yet tested in other applications.

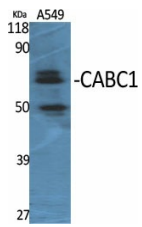
Images



Western Blot analysis of COLO205 cells using CABC1 Polyclonal Antibody



Western blot analysis of lysates from HepG2 and mouse muscle cells, using ADCK3 Antibody. The lane on the right is blocked with the synthesized peptide.



Western Blot analysis of various cells using CABC1 Polyclonal Antibody

Storage

-20°C for one year

501 Changsheng S Rd, Nanhu Dist, Jiaxing, Zhejiang, China

Tel: 86 21 31007137 | E-mail: save@bt-laboratory.com | www.bt-laboratory.com