

Cables1 Polyclonal Antibody

Description

Product type	Primary Antibody
Code	BT-AP01073
Host	Rabbit
Isotype	IgG
Size	20ul, 50ul, 100ul
Immunogen	The antiserum was produced against synthesized peptide derived from human Ik3-1. AA range:561-610
Mol wt	67599
Species reactivity	Human, Mouse
Clonality	Polyclonal
Recommended application	WB, IHC-p, IF, ELISA
Concentration	1 mg/ml
Full name	Cables1 Antibody
Synonyms	CABLES1; CABLES; CDK5 and ABL1 enzyme substrate 1; Interactor with CDK3 1; Ik3-1

This product is for research use only, not for use in human, therapeutic or diagnostic procedure.

Background

CABLES1 encodes a protein (Cdk5 and Abl enzyme substrate 1) involved in regulation of the cell cycle through interactions with several cyclin-dependent kinases. One study (PMID: 16177568) reported aberrant splicing of transcripts from this gene which results in removal of the cyclin binding domain only in human cancer cells, and reduction in gene expression was shown in colorectal cancers (PMID: 17982127). Multiple transcript variants encoding different isoforms have been found for CABLES1.

Recommended Dilution

WB: 1: 500 - 1: 2000

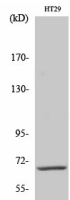
IHC: 1: 100 - 1: 300

IF: 1: 200 - 1: 1000

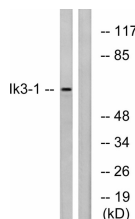
ELISA: 1: 20000

Not yet tested in other applications.

Images



Western Blot analysis of various cells using Cables1 Polyclonal Antibody diluted at 1:500



Western blot analysis of lysates from LOVO cells, using Ik3-1 Antibody. The lane on the right is blocked with the synthesized peptide.

Storage

-20°C for one year

501 Changsheng S Rd, Nanhu Dist, Jiaxing, Zhejiang, China

Tel: 86 21 31007137 | E-mail: save@bt-laboratory.com | www.bt-laboratory.com