

## Cables2 Polyclonal Antibody

### Description

<b>Product type</b>	Primary Antibody
<b>Code</b>	BT-AP01074
<b>Host</b>	Rabbit
<b>Isotype</b>	IgG
<b>Size</b>	20ul, 50ul, 100ul
<b>Immunogen</b>	The antiserum was produced against synthesized peptide derived from human Ik3-2. AA range:91-140
<b>Mol wt</b>	52235
<b>Species reactivity</b>	Human, Mouse
<b>Clonality</b>	Polyclonal
<b>Recommended application</b>	WB, IHC-p, IF, ELISA
<b>Concentration</b>	1 mg/ml
<b>Full name</b>	Cables2 Antibody
<b>Synonyms</b>	CABLES2; C20orf150; CDK5 and ABL1 enzyme substrate 2; Interactor with CDK3 2; Ik3-2

**This product is for research use only, not for use in human, therapeutic or diagnostic procedure.**

### Background

CABLES2 (Cdk5 And Abl Enzyme Substrate 2) is a Protein Coding gene. Among its related pathways are Factors involved in megakaryocyte development and platelet production and Platelet activation, signaling and aggregation. GO annotations related to this gene include cyclin-dependent protein serine/threonine kinase regulator activity. An important paralog of this gene is CABLES1.

### Recommended Dilution

WB: 1: 500 - 1: 2000

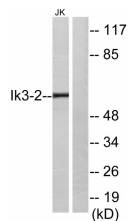
IHC: 1: 100 - 1: 300

IF: 1: 200 - 1: 1000

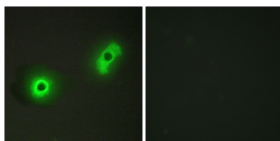
ELISA: 1: 10000

Not yet tested in other applications.

### Images



Western blot analysis of lysates from Jurkat cells, using Ik3-2 Antibody. The lane on the right is blocked with the synthesized peptide.



Immunofluorescence analysis of A549 cells, using Ik3-2 Antibody. The picture on the right is blocked with the synthesized peptide.

### Storage

-20°C for one year

501 Changsheng S Rd, Nanhu Dist, Jiaxing, Zhejiang, China

Tel: 86 21 31007137 | E-mail: [save@bt-laboratory.com](mailto:save@bt-laboratory.com) | [www.bt-laboratory.com](http://www.bt-laboratory.com)