

## Cacna2d1 Polyclonal Antibody

### Description

Product type	Primary Antibody
Code	BT-AP01087
Host	Rabbit
Isotype	IgG
Size	20ul, 50ul, 100ul
Immunogen	The antiserum was produced against synthesized peptide derived from human Cacna2d1. AA range:90-139
Mol wt	123183
Species reactivity	Human, Mouse, Rat
Clonality	Polyclonal
Recommended application	WB, ELISA
Concentration	1 mg/ml
Full name	Cacna2d1 Antibody
Synonyms	CACNA2D1; CACNL2A; CCHL2A; MHS3; Voltage-dependent calcium channel subunit alpha-2/delta-1; Voltage-gated calcium channel subunit alpha-2/delta-1

This product is for research use only, not for use in human, therapeutic or diagnostic procedure.

### Background

The preproprotein encoded by CACNA2D1 (calcium voltage-gated channel auxiliary subunit alpha2delta 1) is cleaved into multiple chains that comprise the alpha-2 and delta subunits of the voltage-dependent calcium channel complex. Calcium channels mediate the influx of calcium ions into the cell upon membrane polarization. Mutations in CACNA2D1 can cause cardiac deficiencies, including Brugada syndrome and short QT syndrome. Alternate splicing results in multiple transcript variants, some of which may lack the delta subunit portion.

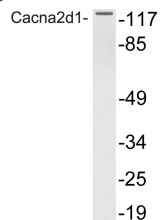
### Recommended Dilution

WB: 1: 500 - 1: 2000

ELISA: 1: 10000

Not yet tested in other applications.

### Images



Western blot analysis of lysate from NIH/3T3 cells, using Cacna2d1 antibody.

### Storage

-20°C for one year