

Cacna2d4 Polyclonal Antibody

Description

Product type	Primary Antibody
Code	BT-AP01088
Host	Rabbit
Isotype	IgG
Size	20ul, 50ul, 100ul
Immunogen	The antiserum was produced against synthesized peptide derived from human CACNA2D4. AA range:548-597
Mol wt	127966
Species reactivity	Human, Mouse, Rat
Clonality	Polyclonal
Recommended application	WB, ELISA
Concentration	1 mg/ml
Full name	Cacna2d4 Antibody
Synonyms	CACNA2D4; Voltage-dependent calcium channel subunit alpha-2/delta-4; Voltage-gated calcium channel subunit alpha-2/delta-4

This product is for research use only, not for use in human, therapeutic or diagnostic procedure.

Background

CACNA2D4 encodes a member of the alpha-2/delta subunit family, a protein in the voltage-dependent calcium channel complex. Calcium channels mediate the influx of calcium ions into the cell upon membrane polarization and consist of a complex of alpha-1, alpha-2/delta, beta, and gamma subunits in a 1:1:1 ratio. Various versions of each of these subunits exist, either expressed from similar genes or the result of alternative splicing. Research on a highly similar protein in rabbit suggests the protein described in this record is cleaved into alpha-2 and delta subunits. Alternate transcriptional splice variants of CACNA2D4 have been observed but have not been thoroughly characterized.

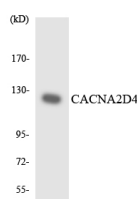
Recommended Dilution

WB: 1: 500 - 1: 2000

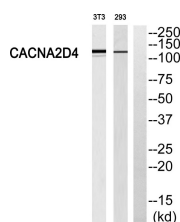
ELISA: 1: 20000

Not yet tested in other applications.

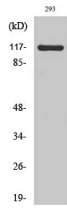
Images



Western blot analysis of the lysates from COLO205 cells using CACNA2D4 antibody.



Western blot analysis of CACNA2D4 Antibody. The lane on the right is blocked with the CACNA2D4 peptide.



Western Blot analysis of various cells using Caena2d4 Polyclonal Antibody

Storage

-20°C for one year

501 Changsheng S Rd, Nanhu Dist, Jiaxing, Zhejiang, China

Tel: 86 21 31007137 | E-mail: save@bt-laboratory.com | www.bt-laboratory.com