

Cadherin-19 Polyclonal Antibody

Description

Product type	Primary Antibody
Code	BT-AP01098
Host	Rabbit
Isotype	IgG
Size	20ul, 50ul, 100ul
Immunogen	The antiserum was produced against synthesized peptide derived from human CDH19. AA range:371-420
Mol wt	87002
Species reactivity	Human
Clonality	Polyclonal
Recommended application	WB, IHC-p, IF, ELISA
Concentration	1 mg/ml
Full name	Cadherin-19 Antibody
Synonyms	CDH19; CDH7L2; Cadherin-19

This product is for research use only, not for use in human, therapeutic or diagnostic procedure.

Background

CDH19 is one of three related type II cadherin genes situated in a cluster on chromosome 18. The encoded protein (cadherin 19) is a calcium dependent cell-cell adhesion glycoprotein containing five extracellular cadherin repeats. Loss of cadherins may be associated with cancer formation. Alternative splicing results in multiple transcript variants for CDH19.

Recommended Dilution

WB: 1: 500 - 1: 2000

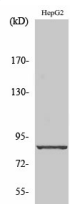
IHC: 1: 100 - 1: 300

IF: 1: 200 - 1: 1000

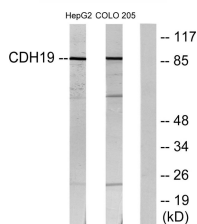
ELISA: 1: 20000

Not yet tested in other applications.

Images



Western Blot analysis of various cells using Cadherin-19 Polyclonal Antibody diluted at 1:1000



Western blot analysis of lysates from HepG2 and COLO205 cells, using CDH19 Antibody. The lane on the right is blocked with the synthesized peptide.

Storage

-20°C for one year

501 Changsheng S Rd, Nanhu Dist, Jiaxing, Zhejiang, China

Tel: 86 21 31007137 | E-mail: save@bt-laboratory.com | www.bt-laboratory.com