

Cadherin-23 Polyclonal Antibody

Description

| | |
|--------------------------------|--|
| Product type | Primary Antibody |
| Code | BT-AP01101 |
| Host | Rabbit |
| Isotype | IgG |
| Size | 20ul, 50ul, 100ul |
| Immunogen | The antiserum was produced against synthesized peptide derived from human CDH23. AA range:61-110 |
| Mol wt | 369525 |
| Species reactivity | Human, Mouse, Rat |
| Clonality | Polyclonal |
| Recommended application | IF, ELISA |
| Concentration | 1 mg/ml |
| Full name | Cadherin-23 Antibody |
| Synonyms | CDH23; KIAA1774; KIAA1812; Cadherin-23; Otocadherin |

This product is for research use only, not for use in human, therapeutic or diagnostic procedure.

Background

CDH23 (cadherin related 23) is a member of the cadherin superfamily, whose genes encode calcium dependent cell-cell adhesion glycoproteins. The encoded protein is thought to be involved in stereocilia organization and hair bundle formation. CDH23 is located in a region containing the human deafness loci DFNB12 and USH1D. Usher syndrome 1D and nonsyndromic autosomal recessive deafness DFNB12 are caused by allelic mutations of this cadherin-like gene. Upregulation of CDH23 may also be associated with breast cancer. Alternative splice variants encoding different isoforms have been described.

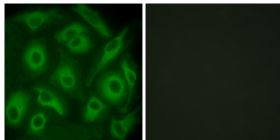
Recommended Dilution

IF: 1: 200 - 1: 1000

ELISA: 1: 10000

Not yet tested in other applications.

Images



Immunofluorescence analysis of HeLa cells, using CDH23 Antibody. The picture on the right is blocked with the synthesized peptide.

Storage

-20°C for one year