

## Cadherin-24 Polyclonal Antibody

### Description

<b>Product type</b>	Primary Antibody
<b>Code</b>	BT-AP01102
<b>Host</b>	Rabbit
<b>Isotype</b>	IgG
<b>Size</b>	20ul, 50ul, 100ul
<b>Immunogen</b>	The antiserum was produced against synthesized peptide derived from human CDH24. AA range:81-130
<b>Mol wt</b>	87752
<b>Species reactivity</b>	Human, Mouse
<b>Clonality</b>	Polyclonal
<b>Recommended application</b>	IF, WB, ELISA
<b>Concentration</b>	1 mg/ml
<b>Full name</b>	Cadherin-24 Antibody
<b>Synonyms</b>	CDH24; CDH11L; Cadherin-24

**This product is for research use only, not for use in human, therapeutic or diagnostic procedure.**

### Background

CDH24, also named as CDH11L, is a member of Cadherins which are calcium dependent cell adhesion proteins. Cadherine preferentially interact with themselves in a homophilic manner in connecting cells; cadherins may thus contribute to the sorting of heterogeneous cell types. Cadherin-24 mediates strong cell-cell adhesion. The antibody can recognize isoform1 and isoform2 of CDH24.

### Recommended Dilution

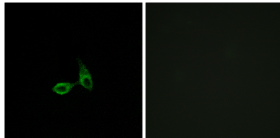
WB: 1: 500 - 2000

ELISA: 1: 10000

IF: 1: 200 - 1: 1000

Not yet tested in other applications.

### Images



Immunofluorescence analysis of HepG2 cells, using CDH24 Antibody. The picture on the right is blocked with the synthesized peptide.

### Storage

-20°C for one year

501 Changsheng S Rd, Nanhu Dist, Jiaxing, Zhejiang, China

Tel: 86 21 31007137 | E-mail: [save@bt-laboratory.com](mailto:save@bt-laboratory.com) | [www.bt-laboratory.com](http://www.bt-laboratory.com)