

Cadherin-26 Polyclonal Antibody

Description

Product type	Primary Antibody
Code	BT-AP01103
Host	Rabbit
Isotype	IgG
Size	20ul, 50ul, 100ul
Immunogen	The antiserum was produced against synthesized peptide derived from human CDH26. AA range:11-60
Mol wt	95278
Species reactivity	Human
Clonality	Polyclonal
Recommended application	WB, IF, ELISA
Concentration	1 mg/ml
Full name	Cadherin-26 Antibody
Synonyms	CDH26; Cadherin-like protein 26; Cadherin-like protein VR20

This product is for research use only, not for use in human, therapeutic or diagnostic procedure.

Background

Cadherins are a family of adhesion molecules that mediate Ca²⁺-dependent cell-cell adhesion in all solid tissues and modulate a wide variety of processes, including cell polarization and migration. Cadherin domains occur as repeats in the extracellular region and are thought to contribute to the sorting of heterogeneous cell types and the maintenance of orderly structures such as epithelium. CDH26 encodes a cadherin domain-containing protein whose specific function has not yet been determined. Alternative splicing occurs at this locus and two transcript variants, encoding distinct proteins, have been identified.

Recommended Dilution

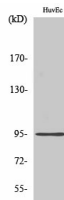
WB: 1: 500 - 1: 2000

IF: 1: 200 - 1: 1000

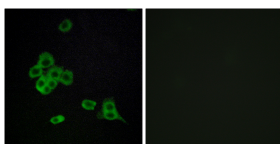
ELISA: 1: 10000

Not yet tested in other applications.

Images



Western Blot analysis of various cells using Cadherin-26 Polyclonal Antibody



Immunofluorescence analysis of MCF7 cells, using CDH26 Antibody. The picture on the right is blocked with the synthesized peptide.

Storage

-20°C for one year

501 Changsheng S Rd, Nanhu Dist, Jiaxing, Zhejiang, China

Tel: 86 21 31007137 | E-mail: save@bt-laboratory.com | www.bt-laboratory.com