

CAF-1 p150 Polyclonal Antibody

Description

Product type	Primary Antibody
Code	BT-AP01107
Host	Rabbit
Isotype	IgG
Size	20ul, 50ul, 100ul
Immunogen	Synthesized peptide derived from CAF-1 p150 . at AA range: 300-380
Mol wt	105223
Species reactivity	Human, Mouse
Clonality	Polyclonal
Recommended application	WB, ELISA
Concentration	1 mg/ml
Full name	CAF-1 p150 Antibody
Synonyms	CHAF1A; CAF; CAF1P150; Chromatin assembly factor 1 subunit A; CAF-1 subunit A; Chromatin assembly factor I p150 subunit; CAF-I 150 kDa subunit; CAF-I p150; hp150

This product is for research use only, not for use in human, therapeutic or diagnostic procedure.

Background

Chromatin assembly factor I (CAF1) is a nuclear complex consisting of p50, p60 (CHAF1B; MIM 601245), and p150 (CHAF1A) subunits that assembles histone octamers onto replicating DNA in vitro.

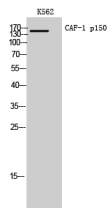
Recommended Dilution

WB: 1: 500 - 1: 2000

ELISA: 1: 10000

Not yet tested in other applications.

Images



Western Blot analysis of K562 cells using CAF-1 p150 Polyclonal Antibody. Secondary antibody was diluted at 1:20000 cells nucleus.

Storage

-20°C for one year