

CAGE-1 Polyclonal Antibody

Description

Product type	Primary Antibody
Code	BT-AP01109
Host	Rabbit
Isotype	IgG
Size	20ul, 50ul, 100ul
Immunogen	The antiserum was produced against synthesized peptide derived from human CAGE1. AA range:711-760
Mol wt	90250
Species reactivity	Human
Clonality	Polyclonal
Recommended application	WB, IHC-p, ELISA
Concentration	1 mg/ml
Full name	CAGE-1 Antibody
Synonyms	CAGE1; CTAG3; Cancer-associated gene 1 protein; CAGE-1; Cancer/testis antigen 3; CT3

This product is for research use only, not for use in human, therapeutic or diagnostic procedure.

Background

CAGE (cancer-associated gene protein), also known as DEAD box protien 53 (DDX53) or DEAD box protein CAGE, belongs to the DEAD box helicase family. It contains one helicase ATP-binding domain, one helicase C-terminal domain and one KH domain. CAGE localizes to the nucleus and, in normal adult tissues, is exclusively expressed in testis but it has also been found in a wide variety of cancer tissues and cell lines. Overexpression of CAGE leads to the activation of FAK, ERK and p38 MAPK along with a reduction in reactive oxygen species (ROS). It is also responsible for inducing catalase activity and therefore enhancing cell motility. This suggests that CAGE may enhance the migration of cancer cells. In addition, hypomethylation of the CAGE promoter region is associated with tumor progression and may serve as a valuable marker in cancer diagnosis.

Recommended Dilution

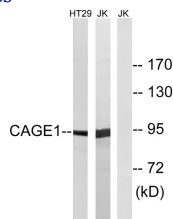
WB: 1: 500 - 1: 2000

IHC: 1: 100 - 1: 300

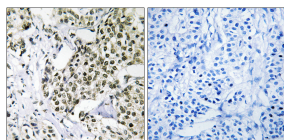
ELISA: 1: 40000

Not yet tested in other applications.

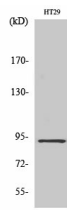
Images



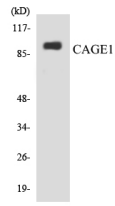
Western blot analysis of lysates from HT-29 and Jurkat cells, using CAGE1 Antibody. The lane on the right is blocked with the synthesized peptide.



Immunohistochemistry analysis of paraffin-embedded human breast carcinoma tissue, using CAGE1 Antibody. The picture on the right is blocked with the synthesized peptide.



Western Blot analysis of various cells using CAGE-1 Polyclonal Antibody diluted at 1:2000



Western blot analysis of the lysates from HepG2 cells using CAGE1 antibody.

Storage

-20°C for one year

501 Changsheng S Rd, Nanhu Dist, Jiaxing, Zhejiang, China

Tel: 86 21 31007137 | E-mail: save@bt-laboratory.com | www.bt-laboratory.com