

MICB Polyclonal Antibody

Description

Product type	Primary Antibody
Code	BT-AP01123
Host	Rabbit
Isotype	IgG
Size	100ul, 50ul, 20ul
Immunogen	Synthesized peptide derived from human MICB
Mol wt	N/A
Species reactivity	Human, Rat, Mouse
Clonality	Polyclonal
Recommended application	IHC-p, IF, WB
Concentration	1 mg/ml
Full name	MICB
Synonyms	MICB; MHC class I polypeptide-related sequence B; MIC-B

This product is for research use only, not for use in human, therapeutic or diagnostic procedure.

Background

This gene encodes a heavily glycosylated protein which is a ligand for the NKG2D type II receptor. Binding of the ligand activates the cytolytic response of natural killer (NK) cells, CD8 alpha beta T cells, and gamma delta T cells which express the receptor. This protein is stress-induced and is similar to MHC class I molecules; however, it does not associate with beta-2-microglobulin or bind peptides. Alternative splicing results in multiple transcript variants.

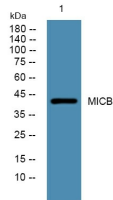
Recommended Dilution

WB: 1: 500 - 1: 2000

IHC-p: 1: 50 - 1: 200

Not yet tested in other applications.

Images



Western blot analysis of lysates from Jarkat cells, primary antibody was diluted at 1:1000, 4°C overnight

Storage

-20°C for 1 year