

Calmodulin Polyclonal Antibody

Description

| | |
|--------------------------------|--|
| Product type | Primary Antibody |
| Code | BT-AP01126 |
| Host | Rabbit |
| Isotype | IgG |
| Size | 20ul, 50ul, 100ul |
| Immunogen | The antiserum was produced against synthesized peptide derived from human Calmodulin. AA range:46-95 |
| Mol wt | 16838 |
| Species reactivity | Human, Mouse, Rat |
| Clonality | Polyclonal |
| Recommended application | WB, IHC-p, IF, ELISA |
| Concentration | 1 mg/ml |
| Full name | Calmodulin Antibody |
| Synonyms | CALM1; CALM; CAM; CAM1; CALM2; CAM2; CAMB; CALM3; CALML2; CAM3; CAMC; CAMIII; Calmodulin; CaM |

This product is for research use only, not for use in human, therapeutic or diagnostic procedure.

Background

CALM1 encodes a member (calmodulin 1) of the EF-hand calcium-binding protein family. It is one of three genes which encode an identical calcium binding protein which is one of the four subunits of phosphorylase kinase. Two pseudogenes have been identified on chromosome 7 and X. Multiple transcript variants encoding different isoforms have been found for CALM1.

Recommended Dilution

WB: 1: 500 - 1: 2000

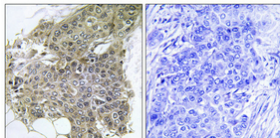
IHC: 1: 100 - 1: 300

IF: 1: 200 - 1: 1000

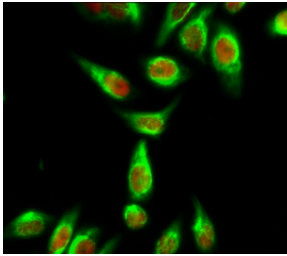
ELISA: 1: 10000

Not yet tested in other applications.

Images

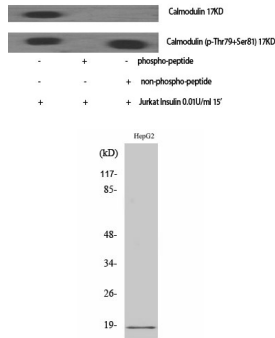


Immunohistochemical analysis of paraffin-embedded Human breast cancer. Antibody was diluted at 1:100(4° overnight). High-pressure and temperature Tris-EDTA,pH8.0 was used for antigen retrieval. Negative contrl (right) obtained from antibody was pre-absorbed by immunogen peptide.

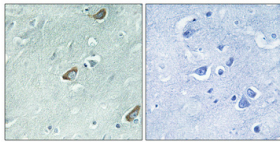


Immunofluorescence analysis of HeLa cell. 1, Calmodulin Polyclonal Antibody (green) was diluted at 1:200 (4° overnight). 2, Goat Anti Rabbit Alexa Fluor 488 (red) was diluted at 1:200 (4° overnight). 3, Goat Anti Mouse Alexa Fluor 594 was diluted at 1:1000 (room temperature, 50min). Goat Anti Rabbit Alexa Fluor 488 was diluted at 1:1000 (room temperature, 50min).

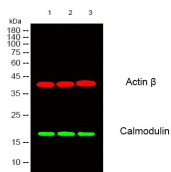
Western Blot analysis of various cells using Calmodulin Polyclonal Antibody diluted at 1:2000



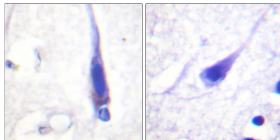
Western Blot analysis of HuvEc cells using Calmodulin Polyclonal Antibody diluted at 1:2000



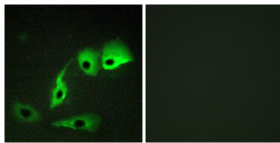
Immunohistochemical analysis of paraffin-embedded Human brain. Antibody was diluted at 1:100 (4° overnight). High-pressure and temperature Tris-EDTA, pH 8.0 was used for antigen retrieval. Negative control (right) obtained from antibody was pre-absorbed by immunogen peptide.



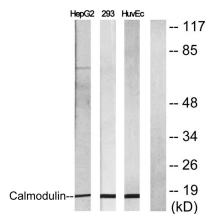
Immunohistochemistry analysis of paraffin-embedded human brain tissue, using Calmodulin Antibody. The picture on the right is blocked with the synthesized peptide.



Immunofluorescence analysis of HepG2 cells, using Calmodulin Antibody. The picture on the right is blocked with the synthesized peptide.



Western blot analysis of lysates from NIH/3T3 cells, using Calmodulin Antibody. The lane on the right is blocked with the synthesized peptide.



Storage

-20°C for one year

501 Changsheng S Rd, Nanhu Dist, Jiaxing, Zhejiang, China

Tel: 86 21 31007137 | E-mail: save@bt-laboratory.com | www.bt-laboratory.com