

Calpain 11 Polyclonal Antibody

Description

Product type	Primary Antibody
Code	BT-AP01130
Host	Rabbit
Isotype	IgG
Size	20ul, 50ul, 100ul
Immunogen	The antiserum was produced against synthesized peptide derived from human CAPN11. AA range:401-450
Mol wt	80583
Species reactivity	Human
Clonality	Polyclonal
Recommended application	WB, ELISA
Concentration	1 mg/ml
Full name	Calpain 11 Antibody
Synonyms	CAPN11; Calpain-11; Calcium-activated neutral proteinase 11; CANP 11

This product is for research use only, not for use in human, therapeutic or diagnostic procedure.

Background

Calpains constitute a family of intracellular calcium-dependent cysteine proteases. There are eight members in this superfamily. They consist of a variable 80 kDa subunit and an invariant 30 kDa subunit. This calpain protein appears to have protease activity and calcium-binding ability. A similar mouse protein may play a functional role in spermatogenesis and in the regulation of calcium-dependent signal transduction events during meiosis.

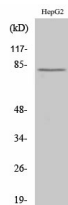
Recommended Dilution

WB: 1: 500 - 1: 2000

ELISA: 1: 5000

Not yet tested in other applications.

Images



Western Blot analysis of various cells using Calpain 11 Polyclonal Antibody

Storage

-20°C for one year