

Calpain 9 Polyclonal Antibody

Description

Product type	Primary Antibody
Code	BT-AP01132
Host	Rabbit
Isotype	IgG
Size	20ul, 50ul, 100ul
Immunogen	The antiserum was produced against synthesized peptide derived from human CAPN9. AA range:481-530
Mol wt	79097
Species reactivity	Human
Clonality	Polyclonal
Recommended application	WB, ELISA
Concentration	1 mg/ml
Full name	Calpain 9 Antibody
Synonyms	CAPN9; NCL4; Calpain-9; Digestive tract-specific calpain; New calpain 4; nCL-4; Protein CG36

This product is for research use only, not for use in human, therapeutic or diagnostic procedure.

Background

Calpains are ubiquitous, well-conserved family of calcium-dependent, cysteine proteases. The calpain proteins are heterodimers consisting of an invariant small subunit and variable large subunits. The large subunit possesses a cysteine protease domain, and both subunits possess calcium-binding domains. Calpains have been implicated in neurodegenerative processes, as their activation can be triggered by calcium influx and oxidative stress. The calpain 9 encoded by CAPN9 is expressed predominantly in stomach and small intestine and may have specialized functions in the digestive tract. This gene is thought to be associated with gastric cancer. Multiple alternatively spliced transcript variants encoding different isoforms have been found for CAPN9.

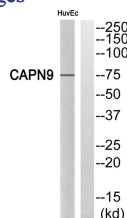
Recommended Dilution

WB: 1: 500 - 1: 2000

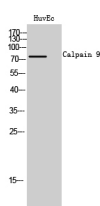
ELISA: 1: 5000

Not yet tested in other applications.

Images



Western blot analysis of CAPN9 Antibody. The lane on the right is blocked with the CAPN9 peptide.



Western Blot analysis of HuvEc cells using Calpain 9 Polyclonal Antibody

Storage

-20°C for one year

501 Changsheng S Rd, Nanhu Dist, Jiaxing, Zhejiang, China

Tel: 86 21 31007137 | E-mail: save@bt-laboratory.com | www.bt-laboratory.com