

CaMKII Beta/Gamma Polyclonal Antibody

Description

Product type	Primary Antibody
Code	BT-AP01144
Host	Rabbit
Isotype	IgG
Size	20ul, 50ul, 100ul
Immunogen	The antiserum was produced against synthesized peptide derived from human CaMK2 beta/gamma. AA range:509-558
Mol wt	62609
Species reactivity	Human, Mouse, Rat
Clonality	Polyclonal
Recommended application	WB, IF, ELISA
Concentration	1 mg/ml
Full name	CaMKIIbeta/gamma Antibody
Synonyms	CAMK2G; CAMK; CAMK-II; CAMKG; Calcium/calmodulin-dependent protein kinase type II subunit gamma; CaM kinase II subunit gamma; CaMK-II subunit gamma; CAMK2B; CAM2; CAMK2; CAMKB; Calcium/calmodulin-depe

This product is for research use only, not for use in human, therapeutic or diagnostic procedure.

Background

The product of CAMK2G is one of the four subunits of an enzyme which belongs to the serine/threonine protein kinase family, and to the Ca²⁺/calmodulin-dependent protein kinase subfamily. Calcium signaling is crucial for several aspects of plasticity at glutamatergic synapses. In mammalian cells the enzyme is composed of four different chains: alpha, beta, gamma, and delta. The product of CAMK2G is a gamma chain. Many alternatively spliced transcripts encoding different isoforms have been described but the full-length nature of all the variants has not been determined.

Recommended Dilution

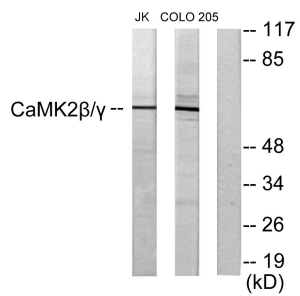
WB: 1: 500 - 1: 2000

IF: 1: 200 - 1: 1000

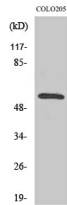
ELISA: 1: 20000

Not yet tested in other applications.

Images



Western blot analysis of lysates from COLO205 and Jurkat cells, using CaMK2 beta/gamma Antibody. The lane on the right is blocked with the synthesized peptide.



Western Blot analysis of various cells using CaMKIIβ/γ Polyclonal Antibody

Storage

-20°C for one year

501 Changsheng S Rd, Nanhu Dist, Jiaxing, Zhejiang, China

Tel: 86 21 31007137 | E-mail: save@bt-laboratory.com | www.bt-laboratory.com