

CaMKIV Polyclonal Antibody

Description

Product type	Primary Antibody
Code	BT-AP01147
Host	Rabbit
Isotype	IgG
Size	20ul, 50ul, 100ul
Immunogen	The antiserum was produced against synthesized peptide derived from human CaMK4. AA range:166-215
Mol wt	51926
Species reactivity	Human, Mouse, Rat
Clonality	Polyclonal
Recommended application	WB, IHC-p, IF, ELISA
Concentration	1 mg/ml
Full name	CaMKIV Antibody
Synonyms	CAMK4; CAMK; CAMK-GR; CAMKIV; Calcium/calmodulin-dependent protein kinase type IV; CaMK IV; CaM kinase-GR

This product is for research use only, not for use in human, therapeutic or diagnostic procedure.

Background

The product of CAMK4 (calcium/calmodulin dependent protein kinase IV) belongs to the serine/threonine protein kinase family, and to the Ca(2+)/calmodulin-dependent protein kinase subfamily. This enzyme is a multifunctional serine/threonine protein kinase with limited tissue distribution, that has been implicated in transcriptional regulation in lymphocytes, neurons and male germ cells.

Recommended Dilution

WB: 1: 500 - 1: 2000

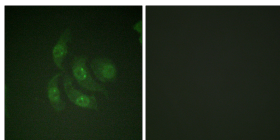
IHC: 1: 100 - 1: 300

IF: 1: 200 - 1: 1000

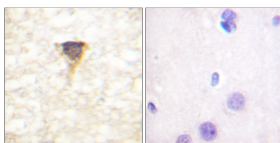
ELISA: 1: 5000

Not yet tested in other applications.

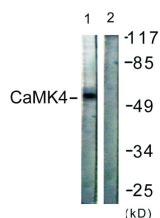
Images



Immunofluorescence analysis of HepG2 cells, using CaMK4 Antibody. The picture on the right is blocked with the synthesized peptide.



Immunohistochemistry analysis of paraffin-embedded human brain tissue, using CaMK4 Antibody. The picture on the right is blocked with the synthesized peptide.



Western blot analysis of lysates from K562 cells, treated with H₂O₂ 100uM 30', using CaMK4 Antibody. The lane on the right is blocked with the synthesized peptide.

Storage

-20°C for one year

501 Changsheng S Rd, Nanhu Dist, Jiaxing, Zhejiang, China

Tel: 86 21 31007137 | E-mail: save@bt-laboratory.com | www.bt-laboratory.com