

CAR Polyclonal Antibody

Description

Product type	Primary Antibody
Code	BT-AP01163
Host	Rabbit
Isotype	IgG
Size	20ul, 50ul, 100ul
Immunogen	The antiserum was produced against synthesized peptide derived from human CXADR. AA range: 1-50
Mol wt	40030
Species reactivity	Human, Mouse, Rat
Clonality	Polyclonal
Recommended application	WB, ELISA
Concentration	1 mg/ml
Full name	CAR Antibody
Synonyms	CXADR; CAR; Coxsackievirus and adenovirus receptor; CAR; hCAR; CVB3-binding protein; Coxsackievirus B-adenovirus receptor; HCVADR

This product is for research use only, not for use in human, therapeutic or diagnostic procedure.

Background

The protein (coxsackie virus and adenovirus receptor) encoded by CXADR is a type I membrane receptor for group B coxsackieviruses and subgroup C adenoviruses. Several transcript variants encoding different isoforms have been found for CXADR. Pseudogenes of CXADR are found on chromosomes 15, 18, and 21.

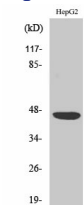
Recommended Dilution

WB: 1: 500 - 1: 2000

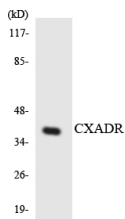
ELISA: 1: 20000

Not yet tested in other applications.

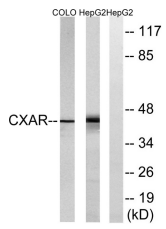
Images



Western Blot analysis of various cells using CAR Polyclonal Antibody



Western blot analysis of the lysates from HeLa cells using CXADR antibody.



Western blot analysis of lysates from HepG2 and COLO cells, using CXADR Antibody. The lane on the right is blocked with the synthesized peptide.

Storage

-20°C for one year

501 Changsheng S Rd, Nanhu Dist, Jiaxing, Zhejiang, China

Tel: 86 21 31007137 | E-mail: save@bt-laboratory.com | www.bt-laboratory.com