

## CARD 14 Polyclonal Antibody

### Description

Product type	Primary Antibody
Code	BT-AP01168
Host	Rabbit
Isotype	IgG
Size	20ul, 50ul, 100ul
Immunogen	The antiserum was produced against synthesized peptide derived from human CAR14. AA range:291-340
Mol wt	113300
Species reactivity	Human, Mouse
Clonality	Polyclonal
Recommended application	IHC-p, IF, ELISA
Concentration	1 mg/ml
Full name	CARD 14 Antibody
Synonyms	CARD14; CARMA2; Caspase recruitment domain-containing protein 14; CARD-containing MAGUK protein 2; Carma 2

This product is for research use only, not for use in human, therapeutic or diagnostic procedure.

### Background

CARD14 (caspase recruitment domain family member 14) encodes a caspase recruitment domain-containing protein that is a member of the membrane-associated guanylate kinase (MAGUK) family of proteins. Members of this protein family are scaffold proteins that are involved in a diverse array of cellular processes including cellular adhesion, signal transduction and cell polarity control. This protein has been shown to specifically interact with BCL10, a protein known to function as a positive regulator of cell apoptosis and NF-kappaB activation. Alternate splicing results in multiple transcript variants.

### Recommended Dilution

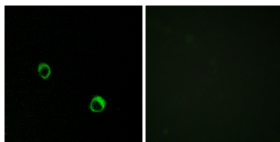
IHC: 1: 100 - 1: 300

IF: 1: 200 - 1: 1000

ELISA: 1: 40000

Not yet tested in other applications.

### Images



Immunofluorescence analysis of MCF7 cells, using CARD14 Antibody. The picture on the right is blocked with the synthesized peptide.

### Storage

-20°C for one year