

## Cardiotrophin-1 Polyclonal Antibody

### Description

<b>Product type</b>	Primary Antibody
<b>Code</b>	BT-AP01170
<b>Host</b>	Rabbit
<b>Isotype</b>	IgG
<b>Size</b>	20ul, 50ul, 100ul
<b>Immunogen</b>	The antiserum was produced against synthesized peptide derived from human Cardiotrophin-1. AA range:31-80
<b>Mol wt</b>	21227
<b>Species reactivity</b>	Human, Mouse, Rat
<b>Clonality</b>	Polyclonal
<b>Recommended application</b>	WB, IHC-p, ELISA
<b>Concentration</b>	1 mg/ml
<b>Full name</b>	Cardiotrophin-1 Antibody
<b>Synonyms</b>	CTF1; Cardiotrophin-1; CT-1

This product is for research use only, not for use in human, therapeutic or diagnostic procedure.

### Background

The protein (cardiotrophin 1) encoded by CTF1 is a secreted cytokine that induces cardiac myocyte hypertrophy in vitro. It has been shown to bind and activate the ILST/gp130 receptor. Two transcript variants encoding different isoforms have been found for CTF1.

### Recommended Dilution

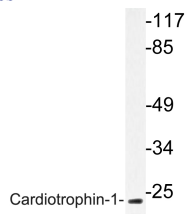
WB: 1: 500 - 1: 2000

IHC: 1: 100 - 1: 300

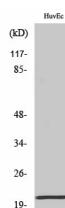
ELISA: 1: 40000

Not yet tested in other applications.

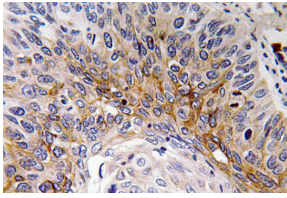
### Images



Western blot analysis of lysate from HUVEC cells, using Cardiotrophin-1 antibody.



Western Blot analysis of various cells using Cardiotrophin-1 Polyclonal Antibody



Immunohistochemistry analysis of Cardiotrophin-1 antibody in paraffin-embedded human lung carcinoma tissue.

#### Storage

-20°C for one year

501 Changsheng S Rd, Nanhu Dist, Jiaxing, Zhejiang, China

Tel: 86 21 31007137 | E-mail: [save@bt-laboratory.com](mailto:save@bt-laboratory.com) | [www.bt-laboratory.com](http://www.bt-laboratory.com)