

CAS Polyclonal Antibody

Description

Product type	Primary Antibody
Code	BT-AP01176
Host	Rabbit
Isotype	IgG
Size	20ul, 50ul, 100ul
Immunogen	The antiserum was produced against synthesized peptide derived from human CSE1L. AA range:1-50
Mol wt	110417
Species reactivity	Human
Clonality	Polyclonal
Recommended application	WB, IHC-p, IP, IF, ELISA
Concentration	1 mg/ml
Full name	CAS Antibody
Synonyms	CSE1L; CAS; XPO2; Exportin-2; Exp2; Cellular apoptosis susceptibility protein; Chromosome segregation 1-like protein; Importin-alpha re-exporter

This product is for research use only, not for use in human, therapeutic or diagnostic procedure.

Background

Proteins that carry a nuclear localization signal (NLS) are transported into the nucleus by the importin-alpha/beta heterodimer. Importin-alpha binds the NLS, while importin-beta mediates translocation through the nuclear pore complex. After translocation, RanGTP binds importin-beta and displaces importin-alpha. Importin-alpha must then be returned to the cytoplasm, leaving the NLS protein behind. The protein encoded by CSE1L binds strongly to NLS-free importin-alpha, and this binding is released in the cytoplasm by the combined action of RANBP1 and RANGAP1. In addition, the encoded protein (chromosome segregation 1 like) may play a role both in apoptosis and in cell proliferation. Alternatively spliced transcript variants have been found for CSE1L.

Recommended Dilution

WB: 1: 500 - 1: 2000

IHC: 1: 100 - 1: 300

IF: 1: 200 - 1: 1000

IP: 2 - 5 ug: mg lysate

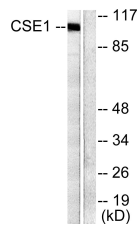
ELISA: 1: 40000

Not yet tested in other applications.

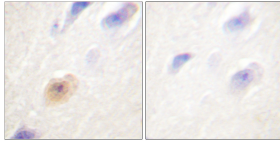
Images



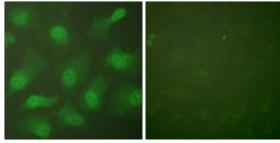
Western Blot analysis of various cells using CAS Polyclonal Antibody diluted at 1:2000



Western blot analysis of lysates from 293 cells, using CSE1L Antibody. The lane on the right is blocked with the synthesized peptide.



Immunohistochemistry analysis of paraffin-embedded human brain tissue, using CSE1L Antibody. The picture on the right is blocked with the synthesized peptide.



Immunofluorescence analysis of HeLa cells, using CSE1L Antibody. The picture on the right is blocked with the synthesized peptide.

Storage

-20°C for one year

501 Changsheng S Rd, Nanhu Dist, Jiaxing, Zhejiang, China

Tel: 86 21 31007137 | E-mail: save@bt-laboratory.com | www.bt-laboratory.com