

Casein Kinase IIBeta Polyclonal Antibody

Description

Product type	Primary Antibody
Code	BT-AP01179
Host	Rabbit
Isotype	IgG
Size	20ul, 50ul, 100ul
Immunogen	The antiserum was produced against synthesized peptide derived from human CKII-beta. AA range:166-215
Mol wt	24942
Species reactivity	Human, Mouse, Rat
Clonality	Polyclonal
Recommended application	WB, IHC-p, ELISA
Concentration	1 mg/ml
Full name	Casein Kinase IIBeta Antibody
Synonyms	CSNK2B; CK2N; G5A; Casein kinase II subunit beta; CK II beta; Phosvitin; Protein G5a

This product is for research use only, not for use in human, therapeutic or diagnostic procedure.

Background

CSNK2B encodes the beta subunit of casein kinase II, a ubiquitous protein kinase which regulates metabolic pathways, signal transduction, transcription, translation, and replication. The enzyme (casein kinase 2 beta) is composed of three subunits, alpha, alpha prime and beta, which form a tetrameric holoenzyme. The alpha and alpha prime subunits are catalytic, while the beta subunit serves regulatory functions. The enzyme localizes to the endoplasmic reticulum and the Golgi apparatus. Two transcript variants encoding different isoforms have been found for CSNK2B.

Recommended Dilution

WB: 1: 500 - 1: 2000

IHC: 1: 100 - 1: 300

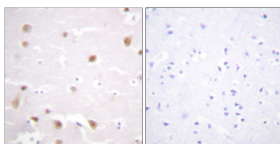
ELISA: 1: 5000

Not yet tested in other applications.

Images

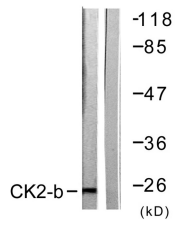


Western Blot analysis of various cells using Casein Kinase IIβ Polyclonal Antibody



Immunohistochemistry analysis of paraffin-embedded human brain tissue, using CKII-beta Antibody.

The picture on the right is blocked with the synthesized peptide.



Storage

-20°C for one year

501 Changsheng S Rd, Nanhu Dist, Jiaxing, Zhejiang, China

Tel: 86 21 31007137 | E-mail: save@bt-laboratory.com | www.bt-laboratory.com