

Casein Kinase I Alpha Polyclonal Antibody

Description

Product type	Primary Antibody
Code	BT-AP01180
Host	Rabbit
Isotype	IgG
Size	20ul, 50ul, 100ul
Immunogen	The antiserum was produced against synthesized peptide derived from human CKI-alpha. AA range:126-175
Mol wt	38915
Species reactivity	Human, Mouse, Rat
Clonality	Polyclonal
Recommended application	WB, IHC-p, IF, ELISA
Concentration	1 mg/ml
Full name	Casein Kinase Ialpha Antibody
Synonyms	CSNK1A1; Casein kinase I isoform alpha; CKI-alpha; CK1

This product is for research use only, not for use in human, therapeutic or diagnostic procedure.

Background

Casein kinase I (also designated CKI) and casein kinase II (CKII) compose a family of serine/threonine protein kinases which are present in all eukaryotes examined to date. Casein kinase I family members, which include casein kinase I α , I γ , I δ and I ϵ , have been implicated in the control of cytoplasmic and nuclear processes, including DNA replication and repair, membrane trafficking, circadian rhythm, cell cycle progression, chromosome segregation, apoptosis and cellular differentiation. Casein kinase I isoform alpha-like (CSNK1A1L) is a 337 amino acid protein that shares a high degree of sequence similarity with the alpha isoform of casein kinase 1. CSNK1A1L resides in the cytoplasm and participates in the Wnt signaling pathway. By utilizing ATP within its protein kinase domain, CSNK1A1L phosphorylates a large number of proteins.

Recommended Dilution

WB: 1: 500 - 1: 2000

IHC: 1: 100 - 1: 300

IF: 1: 200 - 1: 1000

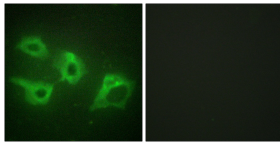
ELISA: 1: 20000

Not yet tested in other applications.

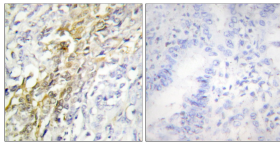
Images



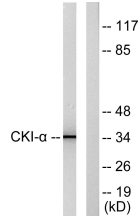
Western Blot analysis of various cells using Casein Kinase I α Polyclonal Antibody



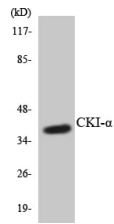
Immunofluorescence analysis of HeLa cells, using CKI-alpha Antibody. The picture on the right is blocked with the synthesized peptide.



Immunohistochemistry analysis of paraffin-embedded human lung carcinoma tissue, using CKI-alpha Antibody. The picture on the right is blocked with the synthesized peptide.



Western blot analysis of lysates from HeLa cells, using CKI-alpha Antibody. The lane on the right is blocked with the synthesized peptide.



Western blot analysis of the lysates from HT-29 cells using CKI-alpha antibody.

Storage

-20°C for one year

501 Changsheng S Rd, Nanhu Dist, Jiaxing, Zhejiang, China

Tel: 86 21 31007137 | E-mail: save@bt-laboratory.com | www.bt-laboratory.com