

## Casein Kinase I Alpha Polyclonal Antibody

### Description

<b>Product type</b>	Primary Antibody
<b>Code</b>	BT-AP01181
<b>Host</b>	Rabbit
<b>Isotype</b>	IgG
<b>Size</b>	20ul, 50ul, 100ul
<b>Immunogen</b>	The antiserum was produced against synthesized peptide derived from human CKI-alpha. AA range:287-336
<b>Mol wt</b>	38915
<b>Species reactivity</b>	Human, Mouse, Rat
<b>Clonality</b>	Polyclonal
<b>Recommended application</b>	WB, IHC-p, IF, ELISA
<b>Concentration</b>	1 mg/ml
<b>Full name</b>	Casein Kinase Ialpha Antibody
<b>Synonyms</b>	CSNK1A1; Casein kinase I isoform alpha; CKI-alpha; CK1

**This product is for research use only, not for use in human, therapeutic or diagnostic procedure.**

### Background

Casein kinase I (also designated CKI) and casein kinase II (CKII) compose a family of serine/threonine protein kinases which are present in all eukaryotes examined to date. Casein kinase I family members, which include casein kinase I $\alpha$ , I $\gamma$ , I $\delta$  and I $\epsilon$ , have been implicated in the control of cytoplasmic and nuclear processes, including DNA replication and repair, membrane trafficking, circadian rhythm, cell cycle progression, chromosome segregation, apoptosis and cellular differentiation. Casein kinase I isoform alpha-like (CSNK1A1L) is a 337 amino acid protein that shares a high degree of sequence similarity with the alpha isoform of casein kinase 1. CSNK1A1L resides in the cytoplasm and participates in the Wnt signaling pathway. By utilizing ATP within its protein kinase domain, CSNK1A1L phosphorylates a large number of proteins.

### Recommended Dilution

WB: 1: 500 - 1: 2000

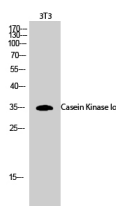
IHC: 1: 100 - 1: 300

IF: 1: 200 - 1: 1000

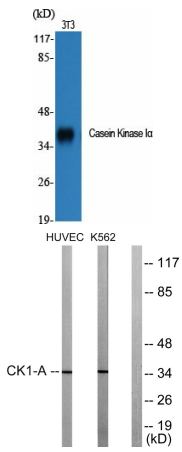
ELISA: 1: 5000

Not yet tested in other applications.

### Images

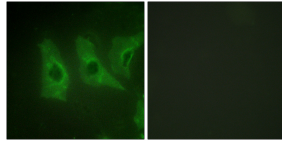


Western Blot analysis of 3T3 cells using Casein Kinase I $\alpha$  Polyclonal Antibody



Western Blot analysis of various cells using Casein Kinase I $\alpha$  Polyclonal Antibody

Western blot analysis of lysates from HUVEC and K562 cells, using CKI-alpha Antibody. The lane on the right is blocked with the synthesized peptide.



Immunofluorescence analysis of HeLa cells, using CKI-alpha Antibody. The picture on the right is blocked with the synthesized peptide.

### Storage

-20°C for one year

501 Changsheng S Rd, Nanhu Dist, Jiaxing, Zhejiang, China

Tel: 86 21 31007137 | E-mail: [save@bt-laboratory.com](mailto:save@bt-laboratory.com) | [www.bt-laboratory.com](http://www.bt-laboratory.com)