

Casein Kinase I γ 1/2/3 Polyclonal Antibody

Description

Product type	Primary Antibody
Code	BT-AP01184
Host	Rabbit
Isotype	IgG
Size	20ul, 50ul, 100ul
Immunogen	The antiserum was produced against synthesized peptide derived from human CK-I γ 1/2/3. AA range:229-278
Mol wt	48511/47457/51389
Species reactivity	Human, Mouse, Rat
Clonality	Polyclonal
Recommended application	IHC-p, ELISA
Concentration	1 mg/ml
Full name	Casein Kinase I γ 1/2/3 Antibody
Synonyms	CSNK1G1; Casein kinase I isoform γ -1; CKI- γ 1; CSNK1G2; CK1G2; Casein kinase I isoform γ -2; CKI- γ 2; CSNK1G3; Casein kinase I isoform γ -3; CKI- γ 3

This product is for research use only, not for use in human, therapeutic or diagnostic procedure.

Background

CSNK1G1 (casein kinase 1 γ 1) encodes a member of the casein kinase I gene family. This family is comprised of serine/threonine kinases that phosphorylate acidic proteins such as caseins. The encoded kinase plays a role in cell cycle checkpoint arrest in response to stalled replication forks by phosphorylating Claspin. A mutation in CSNK1G1 may be associated with non-syndromic early-onset epilepsy (NSEOE).

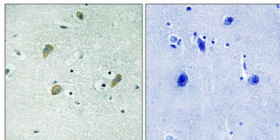
Recommended Dilution

IHC: 1: 100 - 1: 300

ELISA: 1: 40000

Not yet tested in other applications.

Images



Immunohistochemical analysis of paraffin-embedded Human brain. Antibody was diluted at 1:100(4 $^{\circ}$ overnight). High-pressure and temperature Tris-EDTA,pH8.0 was used for antigen retrieval. Negative contrl (right) obtained from antibody was pre-absorbed by immunogen peptide.

Storage

-20 $^{\circ}$ C for one year

501 Changsheng S Rd, Nanhu Dist, Jiaxing, Zhejiang, China

Tel: 86 21 31007137 | E-mail: save@bt-laboratory.com | www.bt-laboratory.com