

Casein Kinase I δ Polyclonal Antibody

Description

Product type	Primary Antibody
Code	BT-AP01186
Host	Rabbit
Isotype	IgG
Size	20ul, 50ul, 100ul
Immunogen	The antiserum was produced against synthesized peptide derived from human CSNK1D. AA range:291-340
Mol wt	47330
Species reactivity	Human, Mouse, Rat
Clonality	Polyclonal
Recommended application	WB, ELISA
Concentration	1 mg/ml
Full name	Casein Kinase I δ Antibody
Synonyms	CSNK1D; HCK1D; Casein kinase I isoform delta; CKI-delta; CKId; Tau-protein kinase CSNK1D

This product is for research use only, not for use in human, therapeutic or diagnostic procedure.

Background

CSNK1D is a member of the casein kinase I (CKI) gene family whose members have been implicated in the control of cytoplasmic and nuclear processes, including DNA replication and repair. Casein kinase I isoform delta may also be involved in the regulation of apoptosis, circadian rhythm, microtubule dynamics, chromosome segregation, and p53-mediated effects on growth. The encoded protein is highly similar to the mouse and rat CK1 delta homologs. Three transcript variants encoding different isoforms have been found for this gene.

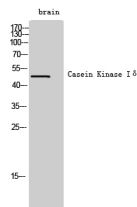
Recommended Dilution

WB: 1: 500 - 1: 2000

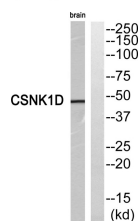
ELISA: 1: 40000

Not yet tested in other applications.

Images



Western Blot analysis of brain cells using Casein Kinase I δ Polyclonal Antibody



Western blot analysis of CSNK1D Antibody. The lane on the right is blocked with the CSNK1D peptide.

Storage

-20°C for one year

501 Changsheng S Rd, Nanhu Dist, Jiaxing, Zhejiang, China

Tel: 86 21 31007137 | E-mail: save@bt-laboratory.com | www.bt-laboratory.com