

## Casein Kinase I Epsilon Polyclonal Antibody

### Description

<b>Product type</b>	Primary Antibody
<b>Code</b>	BT-AP01187
<b>Host</b>	Rabbit
<b>Isotype</b>	IgG
<b>Size</b>	20ul, 50ul, 100ul
<b>Immunogen</b>	The antiserum was produced against synthesized peptide derived from human CKI-epsilon. AA range:276-325
<b>Mol wt</b>	47315
<b>Species reactivity</b>	Human, Mouse
<b>Clonality</b>	Polyclonal
<b>Recommended application</b>	WB, IHC-p, IF, ELISA
<b>Concentration</b>	1 mg/ml
<b>Full name</b>	Casein Kinase I epsilon Antibody
<b>Synonyms</b>	CSNK1E; Casein kinase I isoform epsilon; CKI-epsilon; CKIe

**This product is for research use only, not for use in human, therapeutic or diagnostic procedure.**

### Background

Casein kinase I isoform epsilon encoded by CSNK1E is a serine/threonine protein kinase and a member of the casein kinase I protein family, whose members have been implicated in the control of cytoplasmic and nuclear processes, including DNA replication and repair. The encoded protein is found in the cytoplasm as a monomer and can phosphorylate a variety of proteins, including itself. This protein has been shown to phosphorylate period, a circadian rhythm protein. Two transcript variants encoding the same protein have been found for this gene.

### Recommended Dilution

WB: 1: 500 - 1: 2000

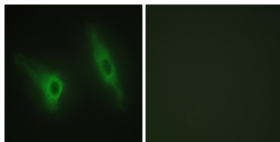
IHC: 1: 100 - 1: 300

IF: 1: 200 - 1: 1000

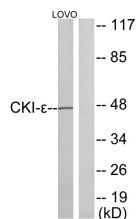
ELISA: 1: 20000

Not yet tested in other applications.

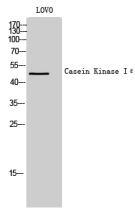
### Images



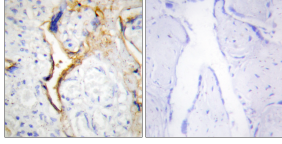
Immunofluorescence analysis of HeLa cells, using CKI-epsilon Antibody. The picture on the right is blocked with the synthesized peptide.



Western blot analysis of lysates from LOVO cells, using CKI-epsilon Antibody. The lane on the right is blocked with the synthesized peptide.



Western Blot analysis of LOVO cells using Casein Kinase Iε Polyclonal Antibody



Immunohistochemistry analysis of paraffin-embedded human placenta tissue, using CKI-epsilon Antibody. The picture on the right is blocked with the synthesized peptide.

### Storage

-20°C for one year

501 Changsheng S Rd, Nanhu Dist, Jiaxing, Zhejiang, China

Tel: 86 21 31007137 | E-mail: [save@bt-laboratory.com](mailto:save@bt-laboratory.com) | [www.bt-laboratory.com](http://www.bt-laboratory.com)