

Caspase12 Polyclonal Antibody

Description

Product type	Primary Antibody
Code	BT-AP01196
Host	Rabbit
Isotype	IgG
Size	20ul, 50ul, 100ul
Immunogen	The antiserum was produced against synthesized peptide derived from human Caspase12. AA range:50-99
Mol wt	38907/29429
Species reactivity	Human
Clonality	Polyclonal
Recommended application	WB, IHC-p, ELISA
Concentration	1 mg/ml
Full name	Caspase12 Antibody
Synonyms	CASP12; Inactive caspase-12; CASP-12

This product is for research use only, not for use in human, therapeutic or diagnostic procedure.

Background

Caspases are cysteine proteases that cleave C-terminal aspartic acid residues on their substrate molecules. CASP12 is most highly related to members of the ICE subfamily of caspases that process inflammatory cytokines. In rodents, the homolog of CASP12 mediates apoptosis in response to endoplasmic reticulum stress. However, in humans CASP12 contains a polymorphism for the presence or absence of a premature stop codon. The majority of human individuals have the premature stop codon and produce a truncated non-functional protein. The read-through codon occurs primarily in individuals of African descent and carriers have endotoxin hypo-responsiveness and an increased susceptibility to severe sepsis. Several alternatively spliced transcript variants have been noted for CASP12.

Recommended Dilution

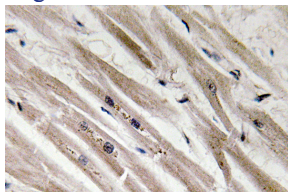
WB: 1: 500 - 1: 2000

IHC: 1: 100 - 1: 300

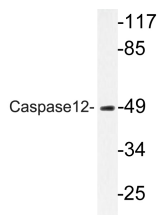
ELISA: 1: 40000

Not yet tested in other applications.

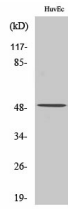
Images



Immunohistochemistry analysis of Caspase12 antibody in paraffin-embedded human heart tissue.



Western blot analysis of lysate from HUVEC cells, using Caspase12 antibody.



Western Blot analysis of various cells using Caspase12 Polyclonal Antibody diluted at 1:500

Storage

-20°C for one year

501 Changsheng S Rd, Nanhu Dist, Jiaxing, Zhejiang, China

Tel: 86 21 31007137 | E-mail: save@bt-laboratory.com | www.bt-laboratory.com