

## Caspase-6 Polyclonal Antibody

### Description

Product type	Primary Antibody
Code	BT-AP01206
Host	Rabbit
Isotype	IgG
Size	20ul, 50ul, 100ul
Immunogen	Synthesized peptide derived from Caspase-6 . at AA range: 20-100
Mol wt	33310
Species reactivity	Human
Clonality	Polyclonal
Recommended application	WB, ELISA
Concentration	1 mg/ml
Full name	Caspase-6 Antibody
Synonyms	CASP6; MCH2; Caspase-6; CASP-6; Apoptotic protease Mch-2

This product is for research use only, not for use in human, therapeutic or diagnostic procedure.

### Background

CASP6 (caspase 6) encodes a member of the cysteine-aspartic acid protease (caspase) family of enzymes. Sequential activation of caspases plays a central role in the execution-phase of cell apoptosis. Caspases exist as inactive proenzymes which undergo proteolytic processing at conserved aspartic acid residues to produce two subunits, large and small, that dimerize to form the active enzyme. This protein is processed by caspases 7, 8 and 10, and is thought to function as a downstream enzyme in the caspase activation cascade. Alternative splicing of CASP6 results in multiple transcript variants that encode different isoforms.

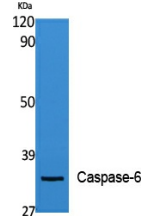
### Recommended Dilution

WB: 1: 500 - 1: 2000

ELISA: 1: 10000

Not yet tested in other applications.

### Images



Western Blot analysis of extracts from Jurkat cells, using Cleaved-Caspase-6 p18 (A24) Polyclonal Antibody. Antibody was diluted at 1:1000

### Storage

-20°C for one year