

## Catalase Polyclonal Antibody

### Description

<b>Product type</b>	Primary Antibody
<b>Code</b>	BT-AP01221
<b>Host</b>	Rabbit
<b>Isotype</b>	IgG
<b>Size</b>	20ul, 50ul, 100ul
<b>Immunogen</b>	The antiserum was produced against synthesized peptide derived from the C-terminal region of human CAT. AA range:478-527
<b>Mol wt</b>	59756
<b>Species reactivity</b>	Human
<b>Clonality</b>	Polyclonal
<b>Recommended application</b>	IF, WB, IHC-p, ELISA
<b>Concentration</b>	1 mg/ml
<b>Full name</b>	Catalase Antibody
<b>Synonyms</b>	CAT; Catalase

**This product is for research use only, not for use in human, therapeutic or diagnostic procedure.**

### Background

CAT encodes catalase, a key antioxidant enzyme in the bodies defense against oxidative stress. Catalase is a heme enzyme that is present in the peroxisome of nearly all aerobic cells. Catalase converts the reactive oxygen species hydrogen peroxide to water and oxygen and thereby mitigates the toxic effects of hydrogen peroxide. Oxidative stress is hypothesized to play a role in the development of many chronic or late-onset diseases such as diabetes, asthma, Alzheimer's disease, systemic lupus erythematosus, rheumatoid arthritis, and cancers. Polymorphisms in this gene have been associated with decreases in catalase activity but, to date, acatalasemia is the only disease known to be caused by this gene.

### Recommended Dilution

WB: 1: 500 - 1: 2000

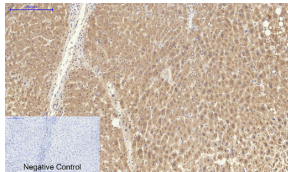
IHC-p: 1: 100 - 300

ELISA: 1: 20000

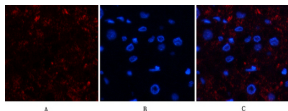
IF: 1: 50 - 200

Not yet tested in other applications.

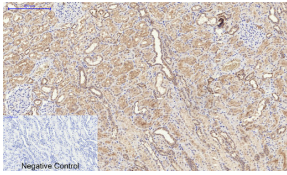
### Images



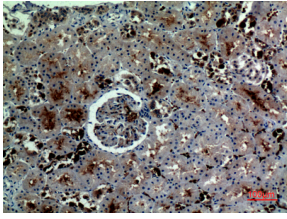
Immunohistochemical analysis of paraffin-embedded Human-liver tissue. 1,Catalase Polyclonal Antibody was diluted at 1:200(4°C,overnight). 2, Sodium citrate pH 6.0 was used for antibody retrieval(>98°C,20min). 3,Secondary antibody was diluted at 1:200(room temperature, 30min). Negative control was used by secondary antibody only.



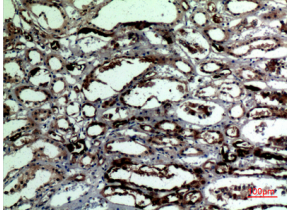
Immunofluorescence analysis of human-kidney-cancer tissue. 1,Catalase Polyclonal Antibody(red) was diluted at 1:200(4°C,overnight). 2, Cy3 labeled Secondary antibody was diluted at 1:300(room temperature, 50min).3, Picture B: DAPI(blue) 10min. Picture A:Target. Picture B: DAPI. Picture C: merge of A+B



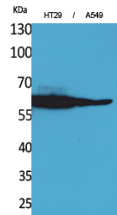
Immunohistochemical analysis of paraffin-embedded Human-kidney tissue. 1, Catalase Polyclonal Antibody was diluted at 1:200(4°C, overnight). 2, Sodium citrate pH 6.0 was used for antibody retrieval (>98°C, 20min). 3, Secondary antibody was diluted at 1:200(room temperature, 30min). Negative control was used by secondary antibody only.



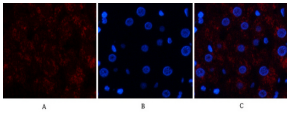
Immunohistochemical analysis of paraffin-embedded human-kidney, antibody was diluted at 1:100



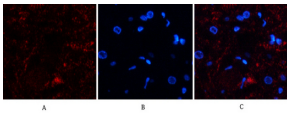
Immunohistochemical analysis of paraffin-embedded human-kidney, antibody was diluted at 1:100



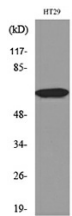
Western Blot analysis of HT29, A549 cells using Catalase Polyclonal Antibody. Antibody was diluted at 1:1000. Secondary antibody was diluted at 1:20000



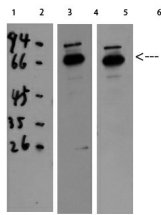
Immunofluorescence analysis of human-liver tissue. 1, Catalase Polyclonal Antibody (red) was diluted at 1:200(4°C, overnight). 2, Cy3 labeled Secondary antibody was diluted at 1:300(room temperature, 50min). 3, Picture B: DAPI (blue) 10min. Picture A: Target. Picture B: DAPI. Picture C: merge of A+B



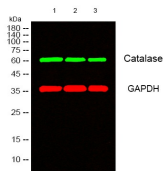
Immunofluorescence analysis of human-kidney-cancer tissue. 1, Catalase Polyclonal Antibody (red) was diluted at 1:200(4°C, overnight). 2, Cy3 labeled Secondary antibody was diluted at 1:300(room temperature, 50min). 3, Picture B: DAPI (blue) 10min. Picture A: Target. Picture B: DAPI. Picture C: merge of A+B

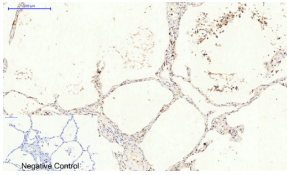


Western blot analysis of lysate from HT29 cells, using CAT Antibody.

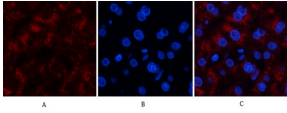


Western Blot analysis of 293T HELA using Catalase Polyclonal Antibody diluted at 1:1000. Secondary antibody was diluted at 1:20000





Immunohistochemical analysis of paraffin-embedded Human-lung tissue. 1,Catalase Polyclonal Antibody was diluted at 1:200(4°C,overnight). 2, Sodium citrate pH 6.0 was used for antibody retrieval(>98°C,20min). 3,Secondary antibody was diluted at 1:200(room tempeRature, 30min). Negative control was used by secondary antibody only.



Immunofluorescence analysis of human-liver tissue. 1,Catalase Polyclonal Antibody(red) was diluted at 1:200(4°C,overnight). 2, Cy3 labeled Secondary antibody was diluted at 1:300(room temperature, 50min).3, Picture B: DAPI(blue) 10min. Picture A:Target. Picture B: DAPI. Picture C: merge of A+B

### Storage

-20°C for one year

501 Changsheng S Rd, Nanhu Dist, Jiaxing, Zhejiang, China

Tel: 86 21 31007137 | E-mail: [save@bt-laboratory.com](mailto:save@bt-laboratory.com) | [www.bt-laboratory.com](http://www.bt-laboratory.com)