

Catenin-Beta Polyclonal Antibody

Description

Product type	Primary Antibody
Code	BT-AP01227
Host	Rabbit
Isotype	IgG
Size	20ul, 50ul, 100ul
Immunogen	Synthesized peptide derived from Catenin- β . at AA range: 490-570
Mol wt	85497
Species reactivity	Human, Mouse, Rat
Clonality	Polyclonal
Recommended application	WB, ELISA
Concentration	1 mg/ml
Full name	Catenin-beta Antibody
Synonyms	CTNNB1; CTNNB; OK/SW-cl.35; Catenin beta-1; Beta-catenin

This product is for research use only, not for use in human, therapeutic or diagnostic procedure.

Background

Catenin beta-1 encoded by CTNNB1 is part of a complex of proteins that constitute adherens junctions (AJs). AJs are necessary for the creation and maintenance of epithelial cell layers by regulating cell growth and adhesion between cells. The encoded protein also anchors the actin cytoskeleton and may be responsible for transmitting the contact inhibition signal that causes cells to stop dividing once the epithelial sheet is complete. Finally, this protein binds to the product of the APC gene, which is mutated in adenomatous polyposis of the colon. Mutations in this gene are a cause of colorectal cancer (CRC), pilomatixoma (PTR), medulloblastoma (MDB), and ovarian cancer. Three transcript variants encoding the same protein have been found for this gene.

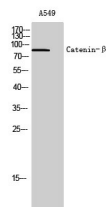
Recommended Dilution

WB: 1: 500 - 1: 2000

ELISA: 1: 5000

Not yet tested in other applications.

Images



Western Blot analysis of A549 cells using Catenin- β Polyclonal Antibody

Storage

-20°C for one year