

Cathepsin B Polyclonal Antibody

Description

Product type	Primary Antibody
Code	BT-AP01235
Host	Rabbit
Isotype	IgG
Size	20ul, 50ul, 100ul
Immunogen	The antiserum was produced against synthesized peptide derived from the Internal region of human CTSB. AA range:200-250
Mol wt	37822
Species reactivity	Human, Mouse, Rat
Clonality	Polyclonal
Recommended application	WB, ELISA
Concentration	1 mg/ml
Full name	Cathepsin B Antibody
Synonyms	CTSB; CPSB; Cathepsin B; APP secretase; APPS; Cathepsin B1

This product is for research use only, not for use in human, therapeutic or diagnostic procedure.

Background

CTSB encodes a member of the C1 family of peptidases. Alternative splicing of CTSB results in multiple transcript variants. At least one of these variants encodes a preproprotein that is proteolytically processed to generate multiple protein products. These products include the cathepsin B light and heavy chains, which can dimerize to form the double chain form of the enzyme. This enzyme is a lysosomal cysteine protease with both endopeptidase and exopeptidase activity that may play a role in protein turnover. It is also known as amyloid precursor protein secretase and is involved in the proteolytic processing of amyloid precursor protein (APP). Incomplete proteolytic processing of APP has been suggested to be a causative factor in Alzheimer's disease, the most common cause of dementia. Overexpression of the encoded protein (cathepsin B) has been associated with esophageal adenocarcinoma and other tumors. Multiple pseudogenes of CTSB have been identified.

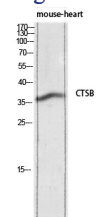
Recommended Dilution

WB: 1: 500 - 1: 2000

ELISA: 1: 10000

Not yet tested in other applications.

Images



Western blot analysis of mouse-heart lysis using CTSB antibody. Antibody was diluted at 1:1000. Secondary antibody was diluted at 1:20000

Storage

-20°C for one year

