

## CBG Polyclonal Antibody

### Description

<b>Product type</b>	Primary Antibody
<b>Code</b>	BT-AP01261
<b>Host</b>	Rabbit
<b>Isotype</b>	IgG
<b>Size</b>	20ul, 50ul, 100ul
<b>Immunogen</b>	The antiserum was produced against synthesized peptide derived from human GBA3. AA range:291-340
<b>Mol wt</b>	53696
<b>Species reactivity</b>	Human
<b>Clonality</b>	Polyclonal
<b>Recommended application</b>	WB, ELISA
<b>Concentration</b>	1 mg/ml
<b>Full name</b>	CBG Antibody
<b>Synonyms</b>	GBA3; CBG; CBGL1; Cytosolic beta-glucosidase; Cytosolic beta-glucosidase-like protein 1

**This product is for research use only, not for use in human, therapeutic or diagnostic procedure.**

### Background

The protein (glucosylceramidase beta 3 (gene/pseudogene)) encoded by GBA3 is an enzyme that can hydrolyze several types of glycosides. GBA3 is a polymorphic pseudogene, with the most common allele being the functional allele that encodes the full-length protein. Some individuals, as represented by the reference genome allele, contain a single nucleotide polymorphism that results in a premature stop codon in the coding region, and therefore this allele is pseudogenic due to the failure to produce a functional full-length protein. Alternative splicing of GBA3 results in multiple transcript variants.

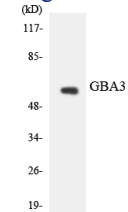
### Recommended Dilution

WB: 1: 500 - 1: 2000

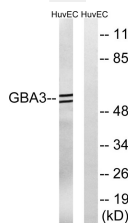
ELISA: 1: 20000

Not yet tested in other applications.

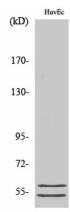
### Images



Western blot analysis of the lysates from HeLa cells using GBA3 antibody.



Western blot analysis of lysates from HUVEC cells, using GBA3 Antibody. The lane on the right is blocked with the synthesized peptide.



Western Blot analysis of various cells using CBG Polyclonal Antibody diluted at 1:500

### Storage

-20°C for one year

501 Changsheng S Rd, Nanhu Dist, Jiaxing, Zhejiang, China

Tel: 86 21 31007137 | E-mail: [save@bt-laboratory.com](mailto:save@bt-laboratory.com) | [www.bt-laboratory.com](http://www.bt-laboratory.com)