

## CBP (Acetyl Lys1535) Polyclonal Antibody

### Description

<b>Product type</b>	Primary Antibody
<b>Code</b>	BT-AP01266
<b>Host</b>	Rabbit
<b>Isotype</b>	IgG
<b>Size</b>	20ul, 50ul, 100ul
<b>Immunogen</b>	The antiserum was produced against synthesized peptide derived from human CBP around the acetylated site of Lys1535. AA range:1501-1550
<b>Mol wt</b>	265351
<b>Species reactivity</b>	Human, Mouse, Rat
<b>Clonality</b>	Polyclonal
<b>Recommended application</b>	WB, IHC-p, ELISA
<b>Concentration</b>	1 mg/ml
<b>Full name</b>	CBP (Acetyl Lys1535) Antibody
<b>Synonyms</b>	CREBBP; CBP; CREB-binding protein

**This product is for research use only, not for use in human, therapeutic or diagnostic procedure.**

### Background

CREBBP is ubiquitously expressed and is involved in the transcriptional coactivation of many different transcription factors. First isolated as a nuclear protein that binds to cAMP-response element binding protein (CREB), CREBBP is now known to play critical roles in embryonic development, growth control, and homeostasis by coupling chromatin remodeling to transcription factor recognition. CREB binding protein has intrinsic histone acetyltransferase activity and also acts as a scaffold to stabilize additional protein interactions with the transcription complex. CREB binding protein acetylates both histone and non-histone proteins. CREB binding protein shares regions of very high sequence similarity with protein p300 in its bromodomain, cysteine-histidine-rich regions, and histone acetyltransferase domain. Mutations in CREBBP cause Rubinstein-Taybi syndrome (RTS). Chromosomal translocations involving CREBBP have been associated with acute myeloid leukemia. Alternative splicing results in multiple transcript variants encoding different isoforms.

### Recommended Dilution

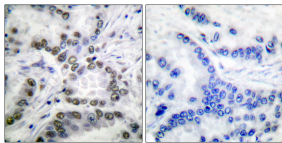
WB: 1: 500 - 1: 2000

IHC: 1: 100 - 1: 300

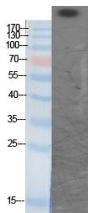
ELISA: 1: 20000

Not yet tested in other applications.

### Images



Immunohistochemistry analysis of paraffin-embedded human lung carcinoma tissue, using CBP (Acetyl-Lys1535) Antibody. The picture on the right is blocked with the synthesized peptide.



Western Blot analysis of various cells using Acetyl-CBP (K1535) Polyclonal Antibody diluted at 1:1000. Secondary antibody was diluted at 1:20000

## Storage

-20°C for one year

501 Changsheng S Rd, Nanhu Dist, Jiaxing, Zhejiang, China

Tel: 86 21 31007137 | E-mail: [save@bt-laboratory.com](mailto:save@bt-laboratory.com) | [www.bt-laboratory.com](http://www.bt-laboratory.com)