

CBP 35 Polyclonal Antibody

Description

Product type	Primary Antibody
Code	BT-AP01268
Host	Rabbit
Isotype	IgG
Size	20ul, 50ul, 100ul
Immunogen	The antiserum was produced against synthesized peptide derived from the C-terminal region of human LGALS3. AA range:201-250
Mol wt	26188
Species reactivity	Human
Clonality	Polyclonal
Recommended application	WB, IHC-p, ELISA
Concentration	1 mg/ml
Full name	CBP 35 Antibody
Synonyms	LGALS3; MAC2; Galectin-3; Gal-3; 35 kDa lectin; Carbohydrate-binding protein 35; CBP 35; Galactose-specific lectin 3; Galactoside-binding protein; GALBP; IgE-binding protein; L-31; Laminin-binding pro

This product is for research use only, not for use in human, therapeutic or diagnostic procedure.

Background

LGALS3 encodes a member of the galectin family of carbohydrate binding proteins. Members of this protein family have an affinity for beta-galactosides. The galectin-3 is characterized by an N-terminal proline-rich tandem repeat domain and a single C-terminal carbohydrate recognition domain. This protein can self-associate through the N-terminal domain allowing it to bind to multivalent saccharide ligands. This protein localizes to the extracellular matrix, the cytoplasm and the nucleus. This protein plays a role in numerous cellular functions including apoptosis, innate immunity, cell adhesion and T-cell regulation. The protein exhibits antimicrobial activity against bacteria and fungi. Alternate splicing results in multiple transcript variants.

Recommended Dilution

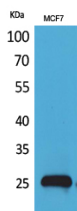
WB: 1: 500 - 1: 2000

IHC-p: 1: 100 - 300

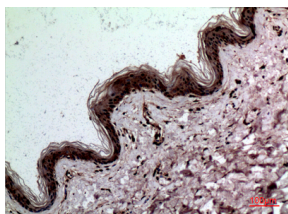
ELISA: 1: 20000

Not yet tested in other applications.

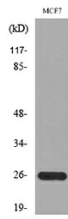
Images



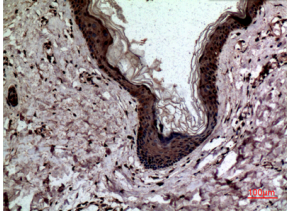
Western Blot analysis of MCF7 cells using CBP 35 Polyclonal Antibody. Secondary antibody was diluted at 1:20000



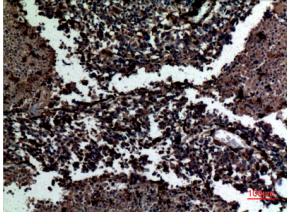
Immunohistochemical analysis of paraffin-embedded human-skin, antibody was diluted at 1:100



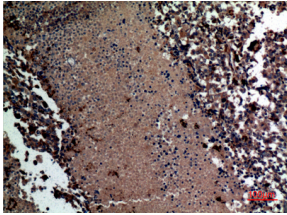
Western blot analysis of lysate from MCF7 cells, using LGALS3 Antibody.



Immunohistochemical analysis of paraffin-embedded human-skin, antibody was diluted at 1:100



Immunohistochemical analysis of paraffin-embedded human-lung-cancer, antibody was diluted at 1:100



Immunohistochemical analysis of paraffin-embedded human-lung-cancer, antibody was diluted at 1:100

Storage

-20°C for one year

501 Changsheng S Rd, Nanhu Dist, Jiaxing, Zhejiang, China

Tel: 86 21 31007137 | E-mail: save@bt-laboratory.com | www.bt-laboratory.com