

CBP Polyclonal Antibody

Description

| | |
|--------------------------------|---|
| Product type | Primary Antibody |
| Code | BT-AP01269 |
| Host | Rabbit |
| Isotype | IgG |
| Size | 20ul, 50ul, 100ul |
| Immunogen | The antiserum was produced against synthesized peptide derived from human CREB-BP. AA range:2393-2442 |
| Mol wt | 265351 |
| Species reactivity | Human, Mouse |
| Clonality | Polyclonal |
| Recommended application | WB, IHC-p, IF, ELISA |
| Concentration | 1 mg/ml |
| Full name | CBP Antibody |
| Synonyms | CREBBP; CBP; CREB-binding protein |

This product is for research use only, not for use in human, therapeutic or diagnostic procedure.

Background

CREBBP is ubiquitously expressed and is involved in the transcriptional coactivation of many different transcription factors. First isolated as a nuclear protein that binds to cAMP-response element binding protein (CREB), CREBBP is now known to play critical roles in embryonic development, growth control, and homeostasis by coupling chromatin remodeling to transcription factor recognition. CREB binding protein has intrinsic histone acetyltransferase activity and also acts as a scaffold to stabilize additional protein interactions with the transcription complex. CREB binding protein acetylates both histone and non-histone proteins. CREB binding protein shares regions of very high sequence similarity with protein p300 in its bromodomain, cysteine-histidine-rich regions, and histone acetyltransferase domain. Mutations in CREBBP cause Rubinstein-Taybi syndrome (RTS). Chromosomal translocations involving CREBBP have been associated with acute myeloid leukemia. Alternative splicing results in multiple transcript variants encoding different isoforms.

Recommended Dilution

WB: 1: 500 - 1: 2000

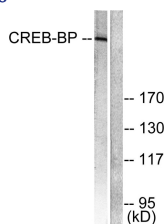
IHC: 1: 100 - 1: 300

IF: 1: 200 - 1: 1000

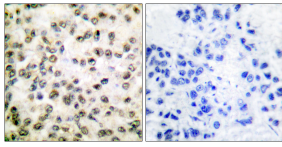
ELISA: 1: 10000

Not yet tested in other applications.

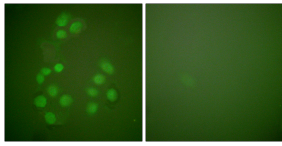
Images



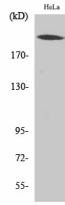
Western blot analysis of lysates from HeLa cells, treated with Insulin 0.01U/ml 15', using CREB-BP Antibody. The lane on the right is blocked with the synthesized peptide.



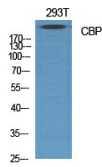
Immunohistochemistry analysis of paraffin-embedded human breast carcinoma tissue, using CREB-BP Antibody. The picture on the right is blocked with the synthesized peptide.



Immunofluorescence analysis of A549 cells, using CREB-BP Antibody. The picture on the right is blocked with the synthesized peptide.



Western Blot analysis of HeLa cells using CBP Polyclonal Antibody diluted at 1:1000



Western Blot analysis of various cells using CBP Polyclonal Antibody diluted at 1:1000

Storage

-20°C for one year

501 Changsheng S Rd, Nanhu Dist, Jiaxing, Zhejiang, China

Tel: 86 21 31007137 | E-mail: save@bt-laboratory.com | www.bt-laboratory.com