

## CBP Polyclonal Antibody

### Description

Product type	Primary Antibody
Code	BT-AP01270
Host	Rabbit
Isotype	IgG
Size	20ul, 50ul, 100ul
Immunogen	The antiserum was produced against synthesized peptide derived from human CBP. AA range:1501-1550
Mol wt	26188
Species reactivity	Human, Mouse, Rat
Clonality	Polyclonal
Recommended application	WB, IHC-p, IF, ELISA
Concentration	1 mg/ml
Full name	CBP Antibody
Synonyms	CREBBP; CBP; CREB-binding protein

This product is for research use only, not for use in human, therapeutic or diagnostic procedure.

### Background

LGALS3 encodes a member of the galectin family of carbohydrate binding proteins. Members of this protein family have an affinity for beta-galactosides. The galectin-3 is characterized by an N-terminal proline-rich tandem repeat domain and a single C-terminal carbohydrate recognition domain. This protein can self-associate through the N-terminal domain allowing it to bind to multivalent saccharide ligands. This protein localizes to the extracellular matrix, the cytoplasm and the nucleus. This protein plays a role in numerous cellular functions including apoptosis, innate immunity, cell adhesion and T-cell regulation. The protein exhibits antimicrobial activity against bacteria and fungi. Alternate splicing results in multiple transcript variants.

### Recommended Dilution

WB: 1: 500 - 1: 2000

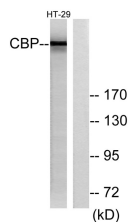
IHC: 1: 100 - 1: 300

IF: 1: 200 - 1: 1000

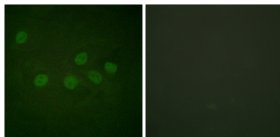
ELISA: 1: 20000

Not yet tested in other applications.

### Images

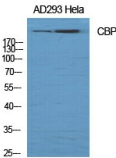


Western blot analysis of lysates from HT-29 cells, treated with calyculinA 50ng/ml 30', using CBP Antibody. The lane on the right is blocked with the synthesized peptide.

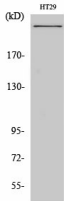


Immunofluorescence analysis of HeLa cells, using CBP Antibody. The picture on the right is blocked with the synthesized peptide.

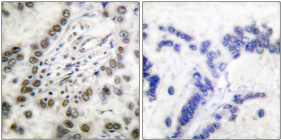
Western Blot analysis of various cells using CBP Polyclonal Antibody diluted at 1:1000



Western Blot analysis of HT29 cells using CBP Polyclonal Antibody diluted at 1:1000



Immunohistochemistry analysis of paraffin-embedded human lung carcinoma tissue, using CBP Antibody. The picture on the right is blocked with the synthesized peptide.



**Storage**

-20°C for one year

501 Changsheng S Rd, Nanhu Dist, Jiaxing, Zhejiang, China  
Tel: 86 21 31007137 | E-mail: save@bt-laboratory.com | www.bt-laboratory.com