

## CBP80 Polyclonal Antibody

### Description

<b>Product type</b>	Primary Antibody
<b>Code</b>	BT-AP01272
<b>Host</b>	Rabbit
<b>Isotype</b>	IgG
<b>Size</b>	20ul, 50ul, 100ul
<b>Immunogen</b>	The antiserum was produced against synthesized peptide derived from human NCBP1. AA range:1-50
<b>Mol wt</b>	91839
<b>Species reactivity</b>	Human, Mouse, Rat
<b>Clonality</b>	Polyclonal
<b>Recommended application</b>	WB, IHC-p, ELISA
<b>Concentration</b>	1 mg/ml
<b>Full name</b>	CBP80 Antibody
<b>Synonyms</b>	NCBP1; CBP80; NCBP; Nuclear cap-binding protein subunit 1; 80 kDa nuclear cap-binding protein; CBP80; NCBP 80 kDa subunit

This product is for research use only, not for use in human, therapeutic or diagnostic procedure.

### Background

The product of NCBP1 is a component of the nuclear cap-binding protein complex (CBC), which binds to the monomethylated 5' cap of nascent pre-mRNA in the nucleoplasm. The encoded protein (nuclear cap binding protein subunit 1) promotes high-affinity mRNA-cap binding and associates with the CTD of RNA polymerase II. The CBC promotes pre-mRNA splicing, 3'-end processing, RNA nuclear export, and nonsense-mediated mRNA decay.

### Recommended Dilution

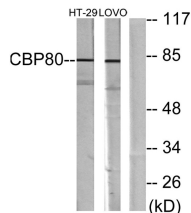
WB: 1: 500 - 1: 2000

IHC: 1: 100 - 1: 300

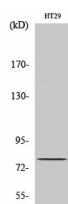
ELISA: 1: 20000

Not yet tested in other applications.

### Images



Western blot analysis of lysates from HT-29 and LOVO cells, using NCBP1 Antibody. The lane on the right is blocked with the synthesized peptide.



Western Blot analysis of various cells using CBP80 Polyclonal Antibody diluted at 1:500

## Storage

-20°C for one year

501 Changsheng S Rd, Nanhu Dist, Jiaxing, Zhejiang, China

Tel: 86 21 31007137 | E-mail: [save@bt-laboratory.com](mailto:save@bt-laboratory.com) | [www.bt-laboratory.com](http://www.bt-laboratory.com)